



# Annual Inspection Report **2025**

Prepared By:



# ANNUAL INSPECTION REPORT 2025

## TABLE OF CONTENTS

1.0 OVERVIEW	Page No.
1.1 GMX System Background	1
1.2 Annual Inspection Program Objective	2
1.3 Annual Inspection Program Scope	2
1.4 Performance Measures	3
MRP Results Table 1	3
1.5 Maintenance and Improvement Projects	4
Scheduled Renewal & Replacement and Capital Improvement and Transportation Improvement Projects Table 2	4
2.0 ASSESSMENT OF EXPRESSWAYS AND TOLL FACILITIES	5
2.1 Expressway Descriptions	5-6
2.1.1 Examples of Completed/Ongoing Improvement Projects	7
GMX Work Program No. 83611	8
GMX Work Program No. 30033	9
Work Program FY 2026-2030 Table 3	10
2.1.2 Summary of Maintenance and Repairs FY24	11
2.2 Inspection	12
2.2.1 Roadway Assessment	13
2.2.1.1 Roadway	13
2.2.1.2 Drainage	13
2.2.1.3 Structural	13
2.2.1.4 Barriers and Fences	14
2.2.1.5 Pavement Markings and Signage	14
2.2.1.6 Electrical (Roadway Lighting)	14
2.2.1.7 Intelligent Transportation System (ITS)	14
2.2.1.8 Landscaping /Aesthetics	14
FIGURE:	
1. Bi-Annual Bridge Condition Assessment	15
2.2.2 Facility / Buildings Assessment	16
2.2.2.1 Architectural/Structural	16
2.2.2.2 Mechanical	16
2.2.2.3 Electrical	17
2.3 Recommendations	17
2.3.1 General Recommendations	18
2.3.2 Urgent Recommendations	18
2.3.3 Critical Recommendations	18
2.4 Status Update of Prior Year General Recommendations	18
2.4.1 General Recommendations	18



2.4.1.1	Roadway	18
2.4.1.2	Facilities	18
2.4.2	Status Update of Prior Year Urgent Recommendations	18
2.4.3	Status Update of Prior Year Critical Recommendations	18

#### ATTACHMENT 1: LOCATION MAPS

1. Roadway System & Tolling Locations
2. Airport Expressway (SR 112)
3. Dolphin Expressway (SR 836)
4. Don Shula Expressway (SR 874)
5. Snapper Creek Expressway (SR 878)
6. Gratigny Parkway (SR 924)
7. NW 138<sup>th</sup> Street - From W. Okeechobee Rd. to the Florida Department of Transportation Right-Of-Way at I-75
8. County Road 94 – Loop Road

#### APPENDICES

- A. Roadway Inspection Photographs
  - SR 112 – Eastbound
  - SR 112 – Westbound
  - SR 836 – Eastbound
  - SR 836 – Westbound
  - SR 874 – Northbound
  - SR 874 – Southbound
  - SR 878 – Eastbound
  - SR 878 – Westbound
  - SR 924 – Eastbound
  - SR 924 – Westbound
  - NW 138<sup>th</sup> Street – From W. Okeechobee Rd. (US-27) to the Florida Department of Transportation Right-Of-Way at I-75 - Eastbound
  - NW 138<sup>th</sup> Street – From the Florida Department of Transportation Right-Of-Way at I-75 to W. Okeechobee Rd. (US-27) – Westbound
- B. Administration Building/ Facilities Inspection Photographs
  - SR 836 MAIN ADMIN BLDG WB
  - SR 836 NW 97<sup>th</sup> AVE ADMIN BLDG WB
  - SR 836 NW 97<sup>th</sup> AVE ADMIN BLDG EB
  - SR 874 ADMIN BLDG NB
  - SR 924 ADMIN BLDG WB
  - GMX HEADQUARTERS BLDG

## ANNUAL INSPECTION REPORT

---

On July 1, 2023, the Greater Miami Expressway Agency (GMX) acquired operational and financial control of five expressways in Miami-Dade County. This group of expressways, toll facilities, acquisition parcels and the GMX headquarters facility, all as described below, are hereinafter referred to as one of the "GMX System". In accordance with the Trust Indenture requirements, GMX retained EAC Consulting, Inc. (EAC), as the General Engineering Consultant to perform, among other duties assigned by the Agency, the yearly inspection of the GMX System. This report represents the annual inspection results for Fiscal Year (FY) 2025. Field inspections were performed from July 15 to October 17, 2025.

### 1.0 OVERVIEW

#### 1.1 GMX System Background

All corridors are listed below and depicted in **Location Map No. 1**

- Airport Expressway (SR 112) from the Miami International Airport to NW 12<sup>th</sup> Avenue.
- Dolphin Expressway (SR 836) from NW 137<sup>th</sup> Avenue to NW 7<sup>th</sup> Avenue.
- Don Shula Expressway (SR 874) from Florida's Turnpike (SR 91) to the Palmetto Expressway (SR 826).
- Snapper Creek Expressway (SR 878) from SR 874 Don Shula Expressway to South Dixie Highway (US 1).
- Gratigny Parkway (SR 924) from the Palmetto Expressway (SR 826) to NW 27<sup>th</sup> Avenue
- NW 138<sup>th</sup> Street from West Okeechobee Road (US-27) to the Florida Department of Transportation Right-of-Way at I-75.
- County Road 94, commonly known as Loop Road, is located in Monroe County. The road begins at SR-41, and it ends at the Monroe County Line.

GMX is responsible for the maintenance, operations and improvements of all roadways and facilities within the GMX System. Routine maintenance functions, for roadway and facility maintenance, are addressed through the GMX Maintenance Contracts. The Toll Systems Integrator (TransCore) is providing maintenance for the tolling system.

Maintenance for the ITS communication infrastructure is performed in-house by GMX staff; however, emergency repairs to the fiber are performed by Horsepower Electric Inc. under GMX Contract ITB-21-08.

The inspection requirements for the GMX System were developed from the criteria set forth in the Trust Indenture. The bond method of funding mandates compliance with several requirements to be performed by GMX on a regular basis. These requirements are as follows:

1. Periodic inspections of all transportation corridors including their components, such as roadways, bridges, drainage structures, etc.
2. Detailed inspections of the toll collection facilities and equipment.

3. Development of the Operation and Maintenance budgets for efficient and safe operations of the toll road facilities.
4. Review the traffic and earnings of each toll road to determine the sufficiency of debt coverage.

This report provides compliance with items 1 and 2 as noted above and summarizes information intended to aid GMX in the development of Item 3. Item 4 is addressed by others under a separate report.

## **1.2 Annual Inspection Program Objective**

The Annual Inspection is conducted to provide GMX with an assessment of the overall condition of the GMX System and identifies specific work needs and deficiencies. The objectives of the inspection program are:

1. Collect information and make observations in each of the areas outlined.
2. Analyze the data.
3. Determine whether or not system needs are adequately addressed in the current GMX Maintenance Program or Renewal & Replacement and Improvement Programs.
4. Provide an overall assessment of the condition of the system.

The process used consists of a visual inspection of the infrastructure's condition throughout the roadway system and its facilities. The summary of the inspection provides information on the operational and overall condition of each roadway asset and building facility.

This data is combined with GMX funding capability in the development of a prioritized repair and improvement budget and program. This report is intended to clearly identify and make recommendations regarding specific needs that are not currently addressed in the GMX Maintenance Contracts or Work Program.

## **1.3 Annual Inspection Program Scope**

To accomplish the objective of this inspection program, the following format was followed to collect the data, assess conditions and provide information for inclusion in GMX's Maintenance Contracts and Work Programs:

1. An inventory system was developed to collect data in order to record the conditions and assess the necessary repairs/maintenance of all facilities of the GMX System.
2. A systemwide inspection was conducted to identify the condition of roadway components which includes pavement, drainage structures, barrier wall, noise wall, mechanically stabilized earth wall, embankment areas, guardrail, lighting, signing, pavement markings, retro-reflective pavement markers, fencing, landscaping and aesthetics.
3. A systemwide inspection was also conducted to identify the condition of building facilities, which includes roofs, walls, floors, lighting, HVAC, electrical systems, windows, doors, parking areas and landscaping.
4. A systemwide inspection was conducted to identify the condition of ITS and tolling infrastructure such as field equipment, pull boxes, fiber optic route markers, splice vaults, concrete aprons, loop detectors and all appurtenances. Monitoring of tolling equipment itself is performed by TransCore using the Maintenance Online Management System (MOMS), a software program that tracks and notifies GMX of any malfunctions with the components of the system.
5. The inspections of bridges, overhead sign structures, Open Road Tolling (ORT) gantry structures and High Mast Lighting were conducted by independent structural inspection firms certified by

The State of Florida providing services to GMX under a separate Contract number RFP 25-01. Data from these structural inspection reports were relied upon for this report as allowed by the Trust Indenture.

6. The identified work needs, GPS location and assigned projects that will address the observed deficiencies are noted in the photographs. Any condition adequately being addressed as part of the routine maintenance contracts or in ongoing GMX projects was cross-referenced to the appropriate GMX Project/Contract Number.
7. A list of repairs or improvements not specifically addressed as part of the routine maintenance or under current GMX Projects was then prepared. This list is presented in the 'Recommendations' section of this report.

EAC will continue to assist, as required, in the development of the maintenance and/or repair programs. The maintenance contracts will be dependent on current and future funding, as well as the urgency of maintenance requirements.

## 1.4 Performance Measures

GMX utilizes the Florida Department of Transportation's Maintenance Rating Program (MRP) to assess the overall condition of its roadway system. The MRP provides a method of conducting a visual and mechanical evaluation of routine highway maintenance conditions. Inspection scores are weighed in accordance with FDOT procedures based on Element Type and Facility Type. GMX facilities such as SR 112, SR 836, SR 874, SR 878, and SR 924 are classified as "Urban Limited Access" and the GMX NW 138<sup>th</sup> St facility is classified as "Urban Principal Arterial".

The purpose of this evaluation is to provide information that can be used to schedule and prioritize routine maintenance activities and to provide uniform maintenance conditions that meet established objectives. Additionally, the MRP provides a uniform means of comparing one roadway facility to another or of comparing prior inspections on the same facility. General program requirements are outlined in the Maintenance Rating Program Handbook published by the Florida Department of Transportation. MRP inspections are performed 3 times per year consistent with FDOT procedures. GMX conducts three additional MRP inspections each year, beyond FDOT requirements, to assess the condition of bridges and ramps not covered under FDOT's inspection program. This task is jointly performed by GMX staff and an independent inspection firm. Both GMX staff and the inspection firm are trained and certified by FDOT in MRP inspections. The MRP results are obtained from the 3 FDOT inspections.

The GMX Performance Criteria Requirement is an overall Fiscal Year MRP score of 91.

The GMX's FY 2025 MRP results are provided in **Table - 1** below.

TABLE – 1		
MRP Data Results FY 2025		
No.	Date	Results
1	July 2024	85
2	November 2024	86
3	March 2025	89
FY 2025 Overall		87

Source: GMX

The year-end MRP overall score of 87 does not meet the required Performance Criteria Goal of 91.

GMX Asset Maintenance Specialty Contracts address deficiencies for each individual discipline. Some of the contracts were awarded in FY 2022 and FY 2024 and the maintenance/repair work activities are ongoing to restore the system to the required Performance Criteria Goal of 91. The resulting scores are mainly due to deficiencies related to raised pavement markers (RPMs), striping and lighting at various locations within the system. The agency has also added R&R projects to the GMX work program to group deficiencies identified for economies of scale.

### 1.5 Maintenance and Improvements Projects

**Table - 2** Highlights of Renewal and Replacement, Capital Improvement and Transportation Improvement Projects that are scheduled to begin construction during GMX's adopted FY 2026-2030 Work Program.

<b>TABLE - 2</b>			
<b>Scheduled Renewal &amp; Replacement and Capital Improvement Projects Work Program FY 2026-2030</b>			
<b>NO.</b>	<b>GMX WORK PROGRAM NO.</b>	<b>DESCRIPTION OF PROJECT</b>	<b>ESTIMATED TOTAL PROJECT COST (000's)</b>
1	<b>30033-000</b>	Systemwide Pavement Markings Rehabilitation	\$4,712
2	<b>30041-000</b>	SR 878 LED lighting upgrades per the Long-Range R&R Program.	\$12,886
3	<b>30044-000</b>	Systemwide Milling & Resurfacing	\$7,468
4	<b>30047-000</b>	Systemwide Structures Rehabilitation	\$732
5	<b>30058-000</b>	Systemwide Sign Panel Replacement	\$3,315
6	<b>30061-000</b>	Milling & Resurfacing of NW 138th Street	\$6,556
7	<b>30064-000</b>	SR 836 Steel Bridge Painting	\$9,288
8	<b>30065-000</b>	Pavement Rehabilitation of SR 924	\$23,782
9	<b>40045-000</b>	Wrong Way Safety Program (Completed)	\$3,603
10	<b>40052-000</b>	SR 924 Operational Improvements NW 32nd Avenue to W of NW 27th Avenue	\$6,576
11	<b>40056-000</b>	SR 874 DMS Installation	\$876
12	<b>40058-000</b>	Toll Collection System Modernization	\$8,438

13	<b>40059-000</b>	SR 112 Alternate Pavement Method	\$1,460
14	<b>40067-000</b>	Speed feedback signs deployment	\$827
15	<b>40071-000</b>	Systemwide Solar Power Solution	\$530
16	<b>83611-001</b>	SR 836 / I-95 Interchange Improvements	\$279,110
17	<b>83618-007</b>	SR 836 EB & WB Widening from HEFT to 97th Ave	\$52,457
18	<b>83634-001</b>	SR 836 New HEFT Ramp Connections	\$56,250
19	<b>87410-001</b>	SR 874 Ramp Connector to SW 128th Street (Completed)	\$112,108
20	<b>87413-000</b>	SR 874/SW 72nd Street Interchange	\$33,187
21	<b>92408-001</b>	SR 924 Partial Interchange at NW 67th Avenue	\$71,265
22	<b>92404-001</b>	SR 924 Extension West to the Homestead Extension of the Florida Turnpike	\$41,292
<b>TOTAL</b>			<b>\$736,718</b>

## 2.0 Assessment of Expressways and Toll Facilities

The assessment of the expressway and facilities operations and conditions is based on the inspection, data collection and data characterization by corridor for roadway features, tolling facilities and administration buildings. A system inspection of the entire length of each expressway in both directions of travel, toll facilities (except as noted otherwise) and the GMX headquarters building was performed by EAC. Additionally, GMX maintenance personnel, and general engineering consulting staff involved in the Work Program development were interviewed for clarification of the scope for all projects included in the next five-year cycle.

The assessment classifies the inspection information and identifies work needs and necessary repairs. This process helps to determine whether or not the needs are being addressed in current GMX projects and assists in developing an implementation program for those needs not being addressed already. The following assessments are generated from the roadway, architectural, structural, mechanical, electrical, Intelligent Transportation System (ITS) and landscaping inspection photographs included in Appendix A (roadway) and Appendix B (facilities).

### 2.1 Expressway Descriptions

The **Airport Expressway (SR 112)**, shown in **Location Map No. 2, Attachment No. 1**, provides access from northern Miami-Dade County to the Miami International Airport. SR 112 is a predominantly six-lane toll road.

The 2024 Calendar Year FDOT Annual Average Daily Traffic (AADT) for SR 112 identifies the road segment eastbound between North River Drive and NW 27<sup>th</sup> Avenue ramp as that with the highest amount of traffic on any given day, averaging 107,500 vehicles.

The **Dolphin Expressway (SR 836)**, shown in **Location Map No. 3, Attachment No. 1**, is a toll road that serves as the main access to downtown Miami from the central and western areas of Miami-Dade County.

The 2024 Calendar Year FDOT AADT for SR 836 identifies the road segment eastbound between NW 72<sup>nd</sup> Avenue and NW 57<sup>th</sup> Avenue as that with the highest amount of traffic on any given day averaging 220,000 vehicles.

The **Don Shula Expressway (SR 874)**, shown in **Location Map No. 4, Attachment No. 1**, provides access to the southwestern area of Miami-Dade County. This expressway has three northbound and three southbound lanes from Killian Parkway to the Homestead extension of Florida's Turnpike, five lanes northbound and southbound from Killian Parkway to SR 878 and three lanes north and southbound from SR 878 to the Palmetto Expressway (SR 826).

The 2024 Calendar Year FDOT AADT for SR 874 identifies the road segment northbound between Killian Dr. and SR 878 as that with the highest amount of traffic on any given day averaging 111,000 vehicles.

The **Snapper Creek Expressway (SR 878)**, as shown in **Location No. 5, Attachment No. 1**, is located between the Don Shula Expressway (SR 874) and US-1. This is a four-lane divided toll road.

The 2024 Calendar Year FDOT AADT for SR 878 identifies the road segment eastbound between SW 87<sup>th</sup> Avenue and SW 72<sup>nd</sup> Avenue as that with the highest amount of traffic on any given day averaging 36,639 vehicles.

The **Gratigny Parkway (SR 924)**, as shown in **Location Map No. 6, Attachment No. 1**, is in northern Miami-Dade County between the Palmetto Expressway (SR 826) and NW 27<sup>th</sup> Avenue. SR 924 is a six-lane divided toll road.

The 2024 Calendar Year FDOT AADT for SR 924 identifies the eastbound road segment between the Palmetto Expressway and NW 57<sup>th</sup> Avenue as having the highest amount of traffic on any given day averaging 64,500 vehicles.

**NW 138<sup>th</sup> Street**, as shown in **Location Map No. 7, Attachment No. 1**, is in the City of Hialeah and Hialeah Gardens and it extends from Okeechobee Road / SR 25 to the Florida Department of Transportation Right-of-Way at I-75 with a typical section varying between five and six travel lanes.

The 2024 Calendar Year FDOT AADT for NW 138<sup>th</sup> Street identifies the road segment eastbound between NW 107<sup>th</sup> Avenue and Hialeah Gardens Drive as having the highest amount of traffic on any given day averaging 30,500 vehicles.

**County Road 94 (Loop Road)**, as shown in **Location Map No. 8, Attachment No. 1**, is in Monroe County, and it runs through the Big Cypress National Preserve. GMX owns approximately 19.5 miles of the two-lane road, of which 8 miles are paved. The unpaved section of road narrows at various times to a width of no more than 15 feet with Cypress swamp on either side.

### 2.1.1 Examples of Completed/Ongoing Improvement Projects

**GMX Work Program No. 83611 – SR 836 / I-95 Interchange Improvements.** This ongoing project consists of a viaduct over SR 836, beginning just east of the toll gantry at NW 17<sup>th</sup> Avenue, rising over the median of SR 836, and touching down at I-395, east of the I-95 Interchange. The double-deck section will provide drivers with a direct connection to MacArthur Causeway, which is free of local entry and exit traffic. In addition, the existing eastbound SR 836 ramp to northbound I-95 will be widened to include an additional lane reducing the congestion that drivers currently experience.

**Photo # 1.**

**GMX Work Program No. 30033 – Systemwide Pavement Markings Rehabilitation.** This project consists of systemwide improvements including installation and replacement of raised pavement markers (RPM), thermoplastic pavement markings, and audible and vibratory pavement markings on concrete roadway segments. **Photo # 2.**



# PHOTO 1

**GMX WORK PROGRAM No. 83611**

**PROJECT DESCRIPTION: SR 836 / I-95 INTERCHANGE IMPROVEMENTS**

**PROJECT START: JULY 2019**

**PROJECT ESTIMATED COMPLETION: OCTOBER 2029**



**DOLPHIN EXPRESSWAY (SR - 836)**

**EXAMPLE OF BRIDGE & ROAD CONSTRUCTION**

# PHOTO 2

**GMX WORK PROGRAM No. 30033**

**PROJECT DESCRIPTION: SYSTEMWIDE PAVEMENT MARKINGS REHABILITATION**

**PROJECT START: SEPTEMBER 2024**

**PROJECT COMPLETION: OCTOBER 2025**



**DON SHULA EXPRESSWAY (SR - 874)**

**EXAMPLE OF PAVEMENT MARKINGS AND RPM'S**

**Table - 3** Highlights of Renewal and Replacement, Transportation and Capital Improvement Projects that are ongoing or recently completed:

<b>TABLE - 3</b>			
<b>Recently Completed or Ongoing Renewal &amp; Replacement, Transportation Improvement and Capital Improvement Projects</b>			
<b>Work Program FY 2026-2030</b>			
<b>NO.</b>	<b>GMX WORK PROGRAM NO.</b>	<b>DESCRIPTION OF PROJECT</b>	<b>ACTUAL/ESTIMATED TOTAL PROJECT COST (000's)</b>
1	30033-000	Systemwide Pavement Markings Rehabilitation	\$5,903
2	30047-000	Systemwide Structures Rehabilitation	\$780
3	30058-000	Systemwide Sign Panel Replacement	\$3,315
4	40045-000	Wrong Way Safety Program (Completed)	\$3,603
5	40056-000	SR 874 DMS Installation	\$876
6	40058-000	Toll Collection System Modernization	\$8,438
7	40059-000	SR 112 Alternate Pavement Method	\$1,460
8	83611-001	SR 836 / I-95 Interchange Improvements	\$279,110
9	83634-001	SR 836 New HEFT Ramp Connections	\$56,250
10	87410-001	SR 874 Ramp Connector to SW 128th Street (Completed)	\$112,108
11	92404-001	SR 924 Extension West to the Homestead Extension of the Florida Turnpike	\$41,292
<b>TOTAL</b>			<b>\$513,135.00</b>

Source: GMX FY 2026 – 2030 Work Program



### **2.1.2 Summary of Maintenance and Repairs FY25**

Below are the completed maintenance repairs quantities for each of the contracts, for GMX fiscal year 2025.

#### **ITB-22-05 SYSTEMWIDE ROADWAY LIGHTING MAINTENANCE**

- Lighting repairs: 960
- Light pole replacements: 10

#### **ITB-22-07 SYSTEMWIDE STRUCTURES MAINTENANCE**

- Bridges repaired: 60
- Sign Structures repaired: 13
- Barrier Wall repaired: 488 LF

#### **ITB-22-09 DRAINAGE INSPECTION AND MAINTENANCE**

- Drainage Structures Cleaned and Desilted: 537
- Drainage Pipes Cleaned and Desilted: 30,353 LF

#### **ITB-23-02 SYSTEMWIDE GUARDRAIL AND FENCING MAINTENANCE**

- Guardrail repaired: 10,574.25 LF
- Guardrail Special Post replaced: 10
- Guardrail Bridge Anchorage Assembly W Beam replaced: 0
- Guardrail End Anchorage Assembly Type I replaced: 7
- Guardrail End Anchorage Assembly, Flared replaced: 19
- Guardrail End Anchorage Assembly, Parallel replaced: 8

#### **ITB-23-03 SYSTEMWIDE POWER GENERATORS MAINTENANCE**

- Generator Technician FTGT-Emergency: 6 MH
- Standalone Temporary Generator (Daily): 0 Days
- Standalone Temporary Generator (Weekly): 0 Weekly
- Miscellaneous parts: 0.07
- Annual Preventive Maintenance < 100 KW: 19 LO
- Annual Preventive Maintenance > 100 KW: 4 LO
- Periodic Preventive Maintenance < 100 KW: 63 LO
- Periodic Preventive Maintenance > 100 KW: 6 LO
- Travel Time: 24.36

#### **ITB-23-09 Systemwide Emergency Debris Removal**

- No debris removal to date.

#### **ITB-23-12 SYSTEMWIDE JANITORIAL AND FACILITIES MAINTENANCE**

- Porter services: 2416 Hours
- Daily Janitorial Services - Nighttime (Business days): 289 Days
- Weekly Janitorial Services – Nighttime once a week (Business days): 317 Weeks
- Monthly Janitorial Services – Nighttime once a month (Business days): 280 Months
- Quarterly Janitorial Services – Nighttime four (4) times a year (Business days): 3 days
- Bi-annual Pressure Cleaning Services: 1 time
- Pest Control: 166,604 SF
- Inspection of Fire Extinguisher: 61 EA
- Water Treatment for Well Systems: 28 EA
- General Laborer: 677 HR
- Carpenter: 5 HR
- Painter: 520.4 HR
- HVAC: 0 HR

- Plumber: 60 HR
- Electrician: 152 HR
- Roofing: 237.31 SF
- Concrete Patch: 10
- Inspection & Recertification of Elevator: 1

#### **ITB-23-17 SYSTEMWIDE SIGNING AND PAVEMENT MARKINGS MAINTENANCE**

- Delineators Flexible High Performance replaced: 383
- Sign Overlay Furnish & Installation SF replaced: 0
- Sign Panel Multi-Post Mount 51-100 SF replaced: 2
- Panel Mount F&I 31-50 SF replaced: 0
- Sign Panel Mount F&I 12-20 SF replaced: 31
- Sign Panel Mount F&I 21-30 SF replaced: 22
- Sign Panel Single Post F&I Less than 12 SF replaced: 283

#### **ITB-24-04 SYSTEMWIDE HVAC MAINTENANCE AND REPAIRS**

- Quarterly Preventive Maintenance GMX HQ (Per Visit): 4 Visit
- Quarterly Preventive Maintenance GMX Shelters and Admin Buildings (Per Visit): 4 Visit
- Certified HVAC Technician (Regular Hourly Rate): 495.45 Manhours
- Certified HVAC Technician (Emergency Hourly Rate): 37 Visit

#### **ITB-23-01 SYSTEMWIDE AESTHETIC MAINTENANCE**

- Cleaning Concrete Surfaces: 11,800 SF
- Coating Concrete Surface Class V: 22,805 SF
- Graffiti Removed: 15,789 SF
- Fertilizer: 30 TN
- Mulch Placements: 1,150 CY
- Roadway Litter Removal: 1,464 TN
- Add Sweeping miles 141.26 Miles
- Add Mowing acres for routine and accelerated 746.7AC

## **2.2 Inspection**

The findings of the MRP for each expressway and facility show that the level of maintenance did not meet the performance criteria goal of 91. The MRP substandard score of 87 is related to deteriorated striping, and Raised Pavement Markers (RPMs) and lighting. The following sections give an overview of the criteria used. Recommend adding " As the Renewal and Replacement Projects are completed the MRP scores are increasing for the inspection of the system. The observation details are listed in the provided photographs.

The overall analysis of the assets on a given expressway, or of the GMX System as a whole, is a subjective assessment based on the following:

1. Consideration of the number and type of needs identified in relation to the expressway length.
2. Determination as to whether the work or repair needs are being adequately addressed under current GMX projects/contracts.
3. Consideration of the expressway classification (all GMX expressways are classified as Urban Limited Access except for NW 138<sup>th</sup> Street, which is classified as Urban Principal Arterial).

4. Consideration of the Average Annual Daily Traffic (AADT) for that expressway.
5. Acknowledgement that at any given point in time, there will be a "normal" backlog of items resulting from vehicular impact damage awaiting repair.
6. Consideration that in this region, hurricane impacts are typically a factor to potentially contend with during any given year.

## **2.2.1 Roadway Assessment**

### **2.2.1.1 ROADWAY**

The results of the inspections of the roadways within the GMX System indicate that most of the pavement is in good condition.

Concrete pavement areas on the east end of SR 836 from NW 7<sup>th</sup> Avenue to NW 12<sup>th</sup> Avenue are from original construction and exhibit cracking and repetitive repairs of potholes. Correction of concrete pavement deficiencies has been included in GMX Work Program Project No. 83611. Construction began in July 2019, and the estimated completion is October 2029.

### **2.2.1.2 DRAINAGE**

The drainage system is in good condition in all corridors. The drainage structures and culverts throughout SR 112, SR 836, SR 874, SR 878 & SR 924, were recently cleaned and desilted. Ponding and flooding continue to be a problem on the SR 836 westbound mainline outside lane and shoulder, west of NW 57<sup>th</sup> Avenue, and on NW 12<sup>th</sup> St. west of NW 29<sup>th</sup> Avenue, where capacity due to undersized drainage pipes is the cause of the problem.

Minor ponding and flooding continue to affect the west end of SR 924, west of NW 32<sup>nd</sup> Avenue, where it appears that the overflow connection from the GMX drainage system towards the east is obstructed. This problem is being addressed by the GMX drainage maintenance contractor in FY 2026.

### **2.2.1.3 STRUCTURAL**

With regards to bridges, extensive and detailed inspections are performed on a bi-annual basis for GMX through the Inspections & Reporting Services Contracts for GMX Structures by Tran-Systems, Inc. Consultants & Marlin Engineering, Inc. Inspections are required to be performed bi-annually by a Florida certified bridge inspection/engineering firm. GMX has chosen to group these inspections into two-year cycles for the purposes of tracking and programming. Structural repairs are currently performed under the Systemwide Structures Maintenance Contract awarded to P&P Contracting, Inc. GMX reported to the Florida Transportation Commission that 91.35% of its bridges were rated as good or better according to FDOT Structural Condition Appraisal rating criteria and no bridges have posted weight restrictions for FY 2025. Refer to Figure 1 (on page 16) for a summary of the Bi-Annual Bridge Condition Assessment.

All toll gantry structural components such as columns, mono-tubes, flange connections and hardware, are in good condition. The surface paint shows signs of ageing systemwide. These structures are scheduled to be repainted per the long-range R & R program under GMX Work Program No. 30043, scheduled to start in FY 2026. Inspections are performed on a bi-annual basis through the Inspection and Reporting Services for GMX Structures Contract referenced above.

Roadway structural components that include curbs, gutters, noise walls, MSE walls and barrier walls are in good to excellent condition. Any vehicular impact damage to the barrier and sound walls is being addressed through the systemwide structures maintenance contract ITB-22-07.

#### **2.2.1.4 BARRIERS AND FENCES**

The Limited-Access fencing is generally in good condition systemwide. There are some access gates throughout the GMX system that require minor adjustments for smooth operation due to routine usage. All vehicular damaged fencing and adjustments to the gates are being addressed through the GMX ITB-23-02 Systemwide Guardrail and Fencing Maintenance contract.

Attenuators and end treatments are in excellent condition systemwide. Although the guardrail is in good condition systemwide, there are on-going daily repairs due to vehicular accidents.

#### **2.2.1.5 PAVEMENT MARKINGS AND SIGNAGE**

Most of the existing multi-post and overhead signs are in good condition systemwide. There are a few multi-post and overhead sign panels, which are being replaced, due to deteriorated reflective sheeting. Reflective Pavement Markers (RPMs) and Wet Weather Pavement Markings for the most part are in good condition. Project 30033 started in FY 2025, to address the remaining deficiencies with the pavement markings.

#### **2.2.1.6 ELECTRICAL (ROADWAY LIGHTING)**

The roadway lighting system is in good condition; however, there are still some malfunctioning LED luminaires on SR 836 & SR 874, which are being replaced as part of the manufacturer's warranty. GMX and the lighting maintenance contractor are currently working with the lighting vendor to resolve these failures. Improvements to the east end of SR 836 from NW 7<sup>th</sup> Avenue to NW 17<sup>th</sup> Avenue, will be completed as part of the GMX Work Program Project 83611.

This Fiscal year, GMX will continue with the LED roadway lighting conversion on SR 878 LED as part of the GMX Project 30041, schedule to start construction in FY 2026.

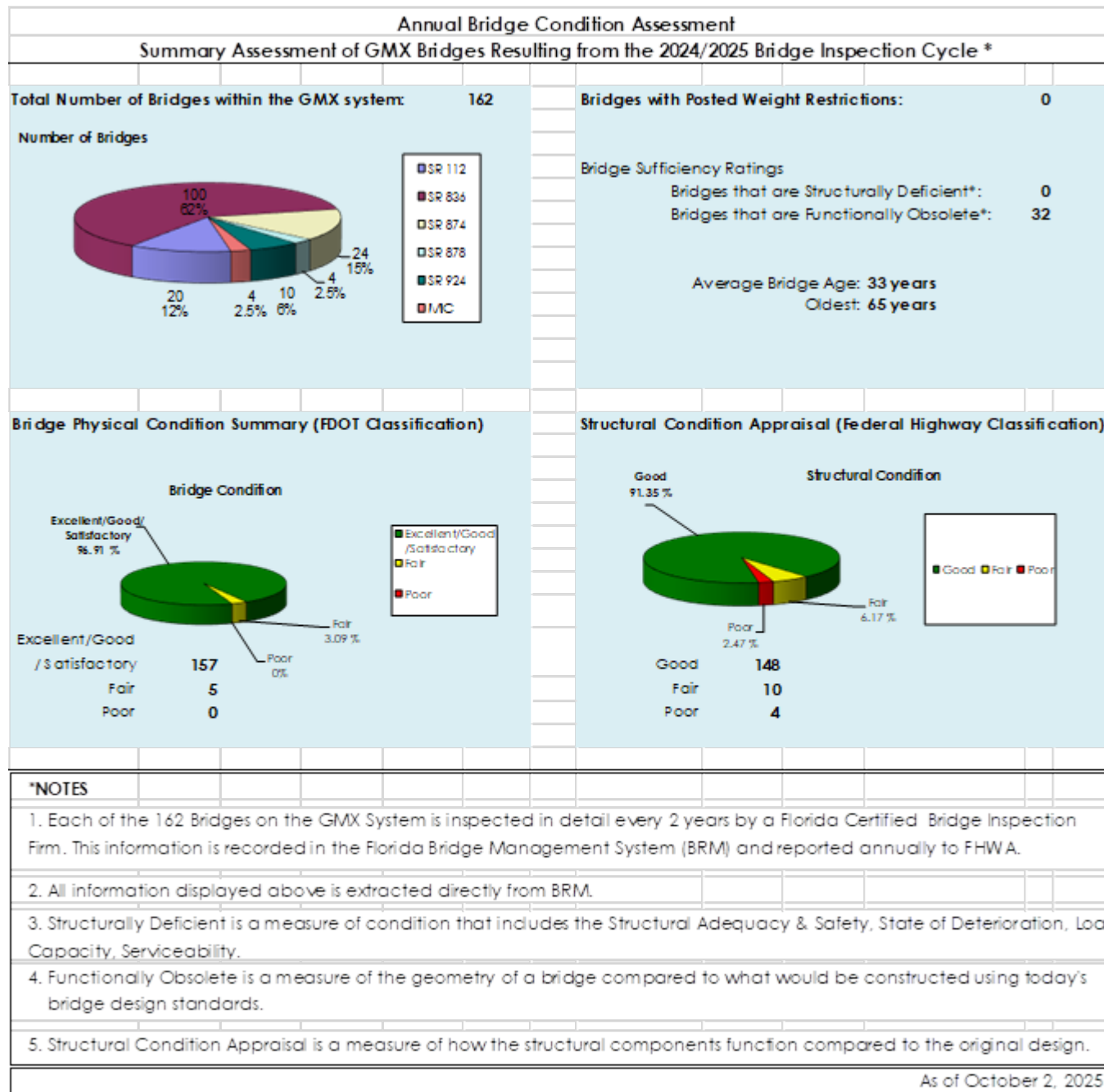
#### **2.2.1.7 INTELLIGENT TRANSPORTATION SYSTEM (ITS)**

Intelligent Transportation Systems (ITS) components such as CCTV cameras, Microwave Vehicles Detection System (MVDS) and Dynamic Message Signs (DMS) with the corresponding control cabinets are in good operational condition systemwide. There are some fiber route markers systemwide that have been damaged by vehicular accidents, which have been repaired or replaced by GMX ITS.

GMX work program 2026-2030 includes new ITS deployment projects to address CCTV blind spots systemwide and needed arterial DMS on the approach to the system. Also included in the work program, is the installation of new DMS on SR 836, SR 874 & SR 924, and the systemwide DMS catwalk replacement. Schedule to begin construction in FY 2026.

#### **2.2.1.8 LANDSCAPING / AESTHETICS**

The roadways are in good condition regarding aesthetics. Routine landscape maintenance, sweeping and trash removal are performed systemwide. Isolated areas of graffiti are also regularly addressed through the GMX RFP-23-01 Systemwide Aesthetic Maintenance contract.





## **2.2.2 Facility / Buildings Assessment**

### **2.2.2.1 ARCHITECTURAL / STRUCTURAL**

The administration buildings on SR 836, SR 874 and SR 924, are generally in good condition.

The exterior walls of the SR 836 Main Administration building at NW 17<sup>th</sup> Avenue, were retrofitted with the fascia panels removed from the old toll plaza and are in good condition. The ceiling tiles, walls and doors are all in good condition. The terrazzo floor displays cracks and sporadic concrete patches but is well maintained. The roof is in good condition and there is no evidence of water intrusion; however, there are isolated areas where the roofing membrane is blistering.

The tunnel at the SR 836 / NW 17<sup>th</sup> Avenue main toll facility under the westbound roadway is structurally in good condition. Minor cracks on walls and ceiling were identified and repaired under GMX Maintenance Contract ITB-22-07 Systemwide Structures Maintenance. The sump pump at the south end of the tunnel was replaced by the facilities maintenance contract in FY 2024.

The exterior panels of the SR 836 east and westbound administration buildings at NW 97<sup>th</sup> Avenue are in good condition. The ceiling tiles, walls, floors, and doors are all in good condition. The paint on the columns throughout the Toll Plaza shows signs of ageing and some light fixtures require repairs. The roof is in good condition and there is no evidence of water intrusion.

The SR 874 administration building's exterior brick walls, windows and doors are in good condition. The exterior paint shows signs of ageing. The roof was replaced November 2024, under GMX Maintenance Contract ITB-23-12 Systemwide Janitorial and Facilities Maintenance.

The SR 924 Administration building exterior stucco walls and columns show multiple cracks, vinyl tile floors, ceiling tiles, walls, and doors are all in good condition. The windows are in fair condition and the roof shows signs of ageing; however, there is no evidence of water intrusion.

The GMX Headquarters exterior stucco walls, flooring, ceiling tiles, and doors are in good condition. For the most part, the windows are in good condition; however, there are some windows that show moisture in between the glass panels. The painting of exterior walls, roof overhang and doors was completed in June 2020. The parking area pavement was resealed and the striping for the parking spaces and directional arrows were re-done and are in good condition. The drainage structures and pipes were cleaned & desilted in September 2025. On Building 1, the roof was replaced in July 2022, and on Building 2, the roof was replaced in October 2024, under Work Program No. 30052.

### **2.2.2.2 MECHANICAL**

The mechanical systems in the administration Buildings systemwide are in good condition. The Chiller, HVAC units and the tracer monitoring system at GMX Headquarters were replaced in July 2020. The HVAC equipment receives cleaning and general routine maintenance. The Data Collection Shelters at the SR 836 NW 97<sup>th</sup> Avenue Toll Plaza and NW 137<sup>th</sup> Avenue are equipped with HVAC backup units which were replaced in FY 2024.

The SR 836 main administration Building and NW 97<sup>th</sup> Avenue east and westbound administration buildings emergency generators are in good condition and receive general routine maintenance.

The SR 874 administration Building emergency generator is in good condition and receives general routine maintenance.

The SR 924 administration Building emergency generator is in good condition and receives general routine maintenance.

HVAC Replacement at SR 112, 836, 874, 878 and SR 924 Tolling facilities were completed in October 2025.

### 2.2.2.3 ELECTRICAL

The electrical inspections of the administration Buildings on SR 836, SR 874, and SR 924 and the GMX Headquarters reveal that the electrical components are in good condition.

## 2.3 Recommendations

The 2025 Annual Inspection has found the GMX System to be in good working order with exceptions as noted, which are being addressed by the Asset Maintenance Contracts and Work Program Projects.

Recommendations are offered for further improvements in the GMX Maintenance Program and Work Program. The recommended actions are outlined in the following sections of this report and represent issues identified through the inspection process as well as those identified by GMX Maintenance and Operations Personnel. Recommendations are categorized by discipline and degree of urgency. Some recommendations are more general in nature and are directed to the Maintenance and Improvement program as a whole.

Recommendations are made for only those items that may not be adequately addressed in the ongoing maintenance program or R&R and improvement programs. For more information on the work or repair needs noted in the inspection process refer to the detailed Inspection Data Collection Sheets under each facility in the corresponding Appendix. The following categories are used to assess the level of urgency of work required:

1. **General:** recommendations should be considered for inclusion in the work effort at the earliest date that funding allows.
2. **Urgent:** recommendations should be addressed as soon as possible to avoid deterioration and additional long-term expenses.
3. **Critical:** recommendations should be addressed immediately to protect the safety of GMX patrons and the system.

### **2.3.1 General Recommendations**

In addition to repairs and improvements identified to be addressed under ongoing and future Asset Maintenance and Work Program projects, we recommend performing an evaluation on the SR 836 mainline drainage, west of NW 57<sup>th</sup> Avenue, and on NW 29<sup>th</sup> Avenue at NW 14<sup>th</sup> Street to determine the cause of the flooding. The GMX GEC design consultant is evaluating this problem in FY 2026.

Perform an evaluation on the SR 836 ramp S-E Flyover bridge #871050 east abutment, to reconstruct the eroded slope and to upgrade the drainage system to eliminate overflow.

Perform an evaluation to replace the High-Pressure Sodium (HPS) lighting with LED lights on all High-mast lights systemwide, since suppliers are no longer manufacturing replacement parts.

### **2.3.2 Urgent Recommendations**

There are no recommendations categorized as urgent.

### **2.3.3 Critical Recommendations**

There are no recommendations categorized as critical.

## **2.4 Status Update of Prior Year General Recommendations**

### **2.4.1 General Recommendations**

#### **2.4.1.1 ROADWAY**

Perform an evaluation on several bridges throughout the SR 112 and SR 874 corridors, to determine if a deck overlay is needed to improve wet weather traction. This evaluation remains pending.

Malfunctioning solar power reflective pavement markers (RPMs), throughout the four pilot sites on SR 836, SR 874 & SR 924 off-ramps, were replaced with standard retro-reflective RPMs by the GMX Systemwide Pavement Markings Rehabilitation Work Program Project # 30033 in FY 2025.

#### **2.4.1.2 FACILITIES**

Perform an evaluation of the existing roof on the SR 924 administration buildings, to determine the remaining life expectancy of the roof. This evaluation remains pending.

### **2.4.2 Status Update of Prior Year Urgent Recommendations**

There were no recommendations categorized as urgent from the prior Annual Inspection Report.

### **2.4.3 Status Update of Prior Year Critical Recommendations**

There were no recommendations categorized as critical from the prior Annual Inspection Report.



General Engineering Consultant to the  
Greater Miami Expressway Agency

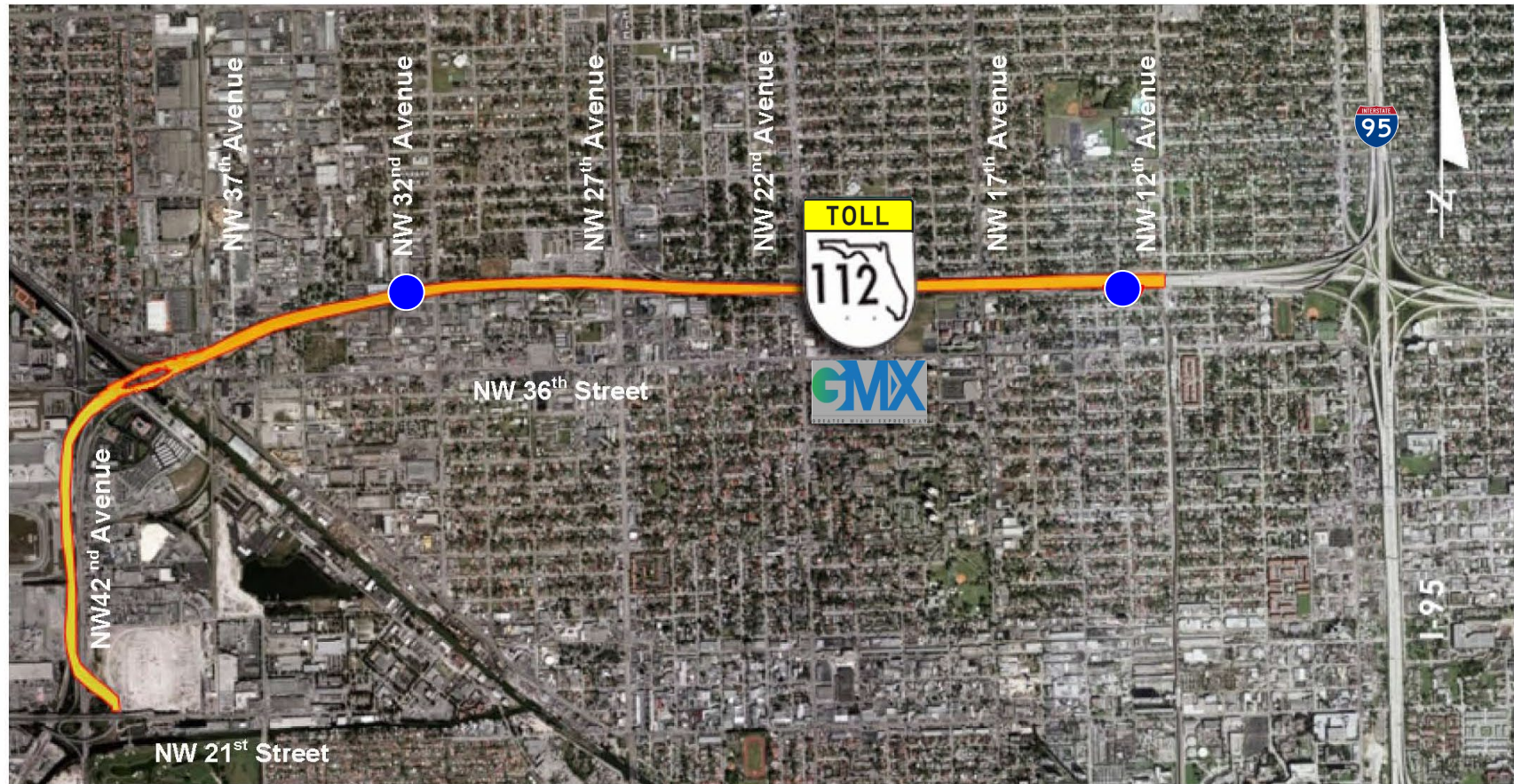
## GMX ROADWAY SYSTEM & TOLLING LOCATIONS

LOCATION MAP No. 1





## ANNUAL INSPECTION REPORT FY 2025



### LEGEND

- ORT Gantry – Both Directions

Not to Scale



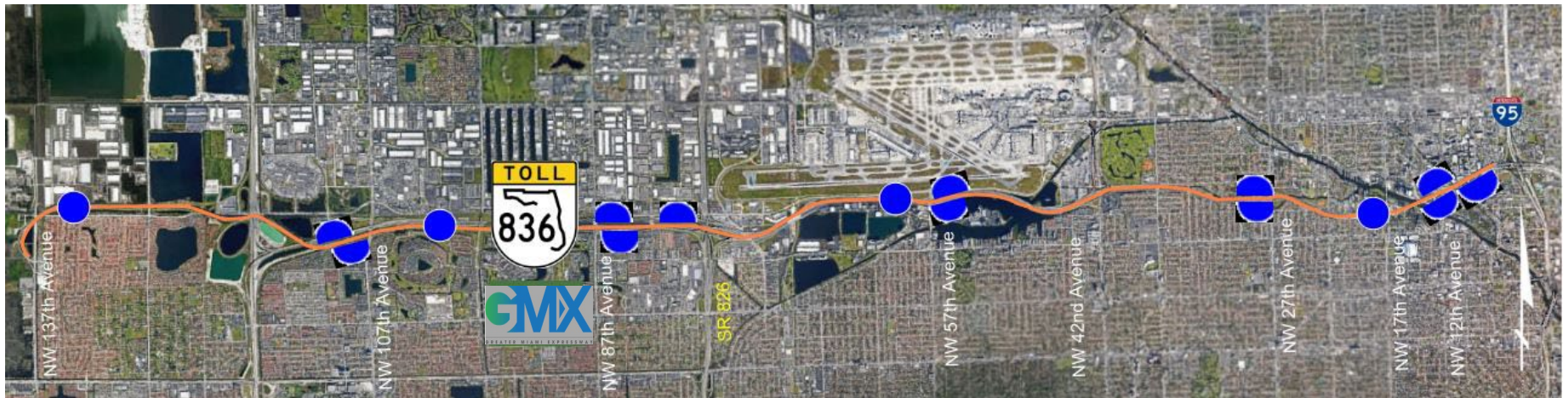
**AIRPORT EXPRESSWAY (SR 112)  
FROM LEJEUNE RD. TO NW 12<sup>TH</sup> AVE.**

LOCATION MAP No. 2





## ANNUAL INSPECTION REPORT FY 2025



### LEGEND

*Not to Scale*

- ORT Gantry (One Direction)
- ORT Gantry (Both Directions)

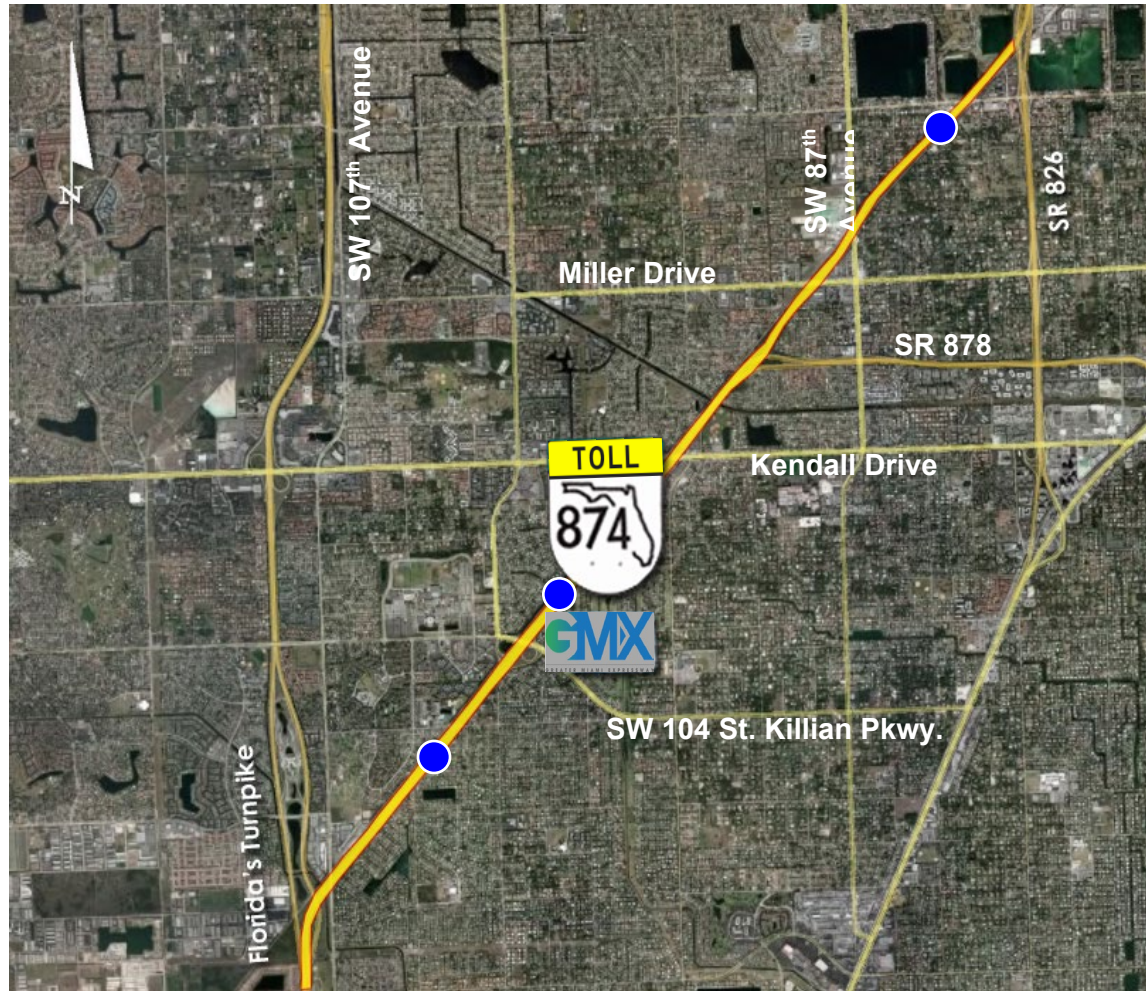


**DOLPHIN EXPRESSWAY (SR 836)  
FROM N.W. 137<sup>th</sup> AVE. TO N.W. 7<sup>th</sup> AVE.**

LOCATION MAP No. 3



## ANNUAL INSPECTION REPORT FY 2025



### LEGEND

- ORT Gantry  
Both Directions



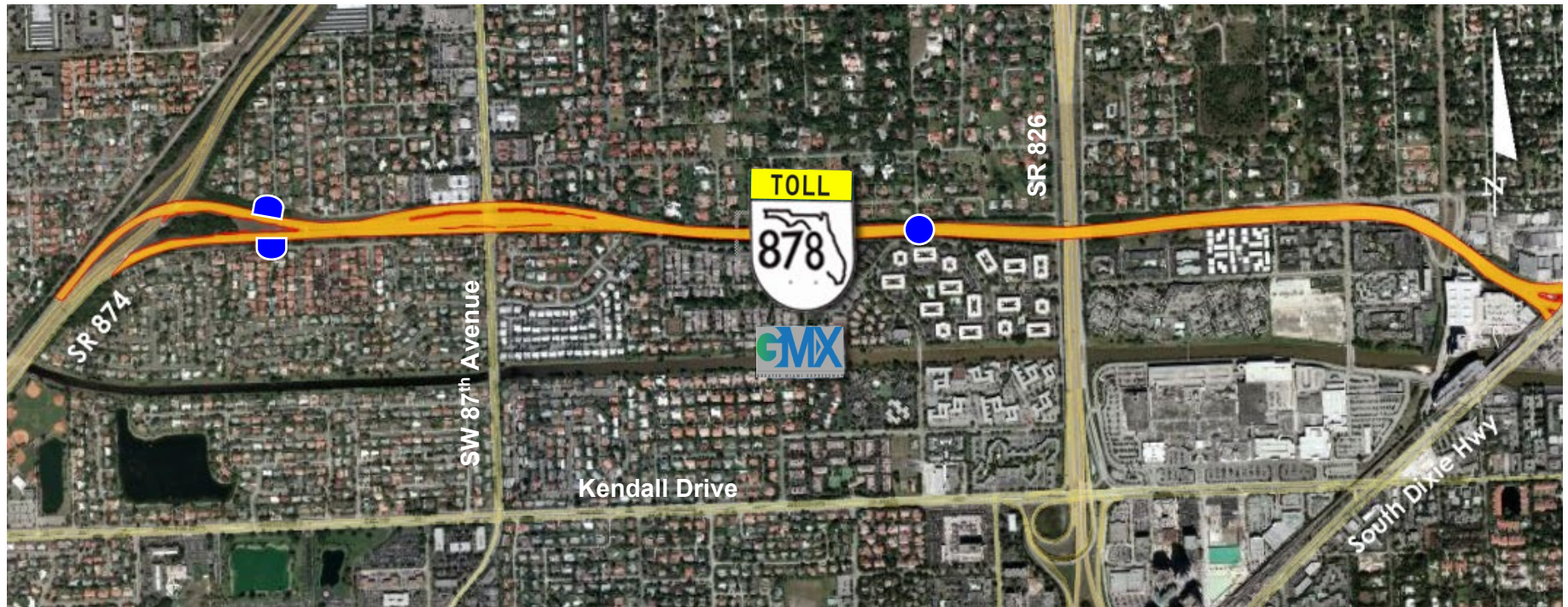
**DON SHULA EXPRESSWAY (SR 874)  
FROM FLORIDA'S TURNPIKE TO PALMETTO EXPRESSWAY (SR 826)**

LOCATION MAP No. 4





## ANNUAL INSPECTION REPORT FY 2025



Not to Scale

### LEGEND

- ORT Gantry – One Direction
- ORT Gantry – Both Directions



**SNAPPER CREEK EXPRESSWAY (SR 878)  
FROM DON SHULA EXPRESSWAY (SR 874) TO S. DIXIE HIGHWAY**

LOCATION MAP No. 5





## ANNUAL INSPECTION REPORT FY 2025



### LEGEND

*Not to Scale*

● ORT Gantry – Both Directions



General Engineering Consultant to the  
Greater Miami Expressway Agency

**GRATIGNY PARKWAY (SR 924)  
FROM PALMETTO EXPRESSWAY (SR 826) TO NW 27<sup>TH</sup> AVE.**

LOCATION MAP No. 6



## ANNUAL INSPECTION REPORT FY 2025



*Not to Scale*



General Engineering Consultant to the  
Greater Miami Expressway Agency

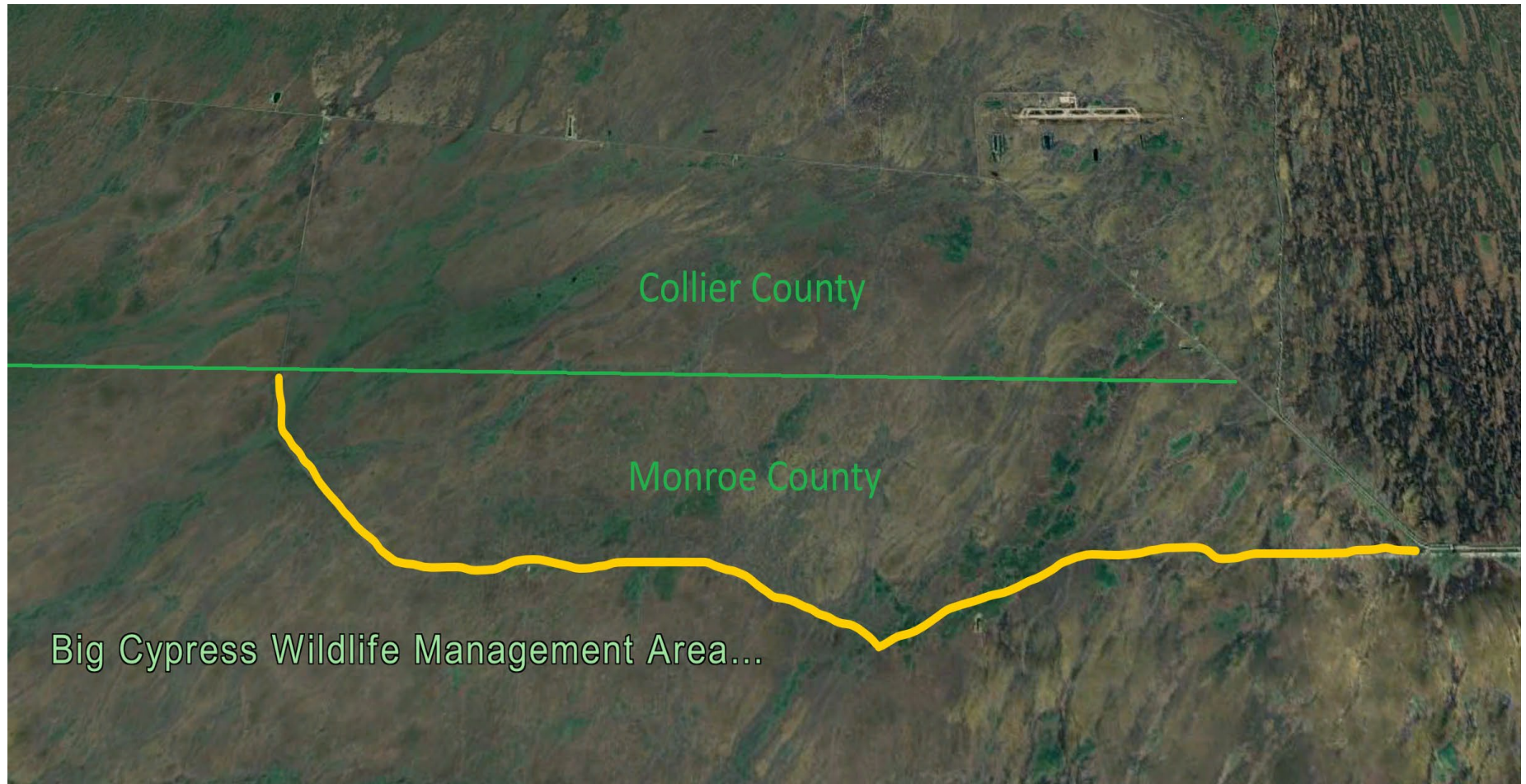
**NW 138<sup>TH</sup> STREET FROM WEST OKEECHOBEE RD. TO THE FLORIDA DEPARTMENT OF TRANSPORTATION  
RIGHT-OF-WAY AT I-75**

LOCATION MAP No. 7





## ANNUAL INSPECTION REPORT FY 2025



General Engineering Consultant to the  
Greater Miami Expressway Agency

COUNTY ROAD 94 (LOOP ROAD)  
EXTENDS FROM THE MONROE COUNTY LINE TO SR-41.

LOCATION MAP No. 8

GMX ANNUAL ROADWAY INSPECTION  
SR 112 EASTBOUND



General Engineering Consultant to the  
Greater Miami Expressway Agency

**GENERAL ENGINEERING CONSULTANT INSPECTION AND  
EVALUATION OF THE MIAMI-DADE COUNTY EXPRESSWAY  
SYSTEM**

**AIRPORT EXPRESSWAY (SR-112): 4.00 MILES  
PHOTOGRAPHIC INVENTORY**

**PHOTO NO.: EB-001**

**DATE: 8-6-2025**

**ROADWAY INSPECTION**

**LOCATION: MILE MARKER 0.85**

**EASTBOUND ON-RAMP FROM NW 36<sup>TH</sup> St.**



**DETERIORATED PAINT ON STEEL BRIDGE/ CLASS V COATING ON CONCRETE  
SURFACES  
(BRIDGE 870962)**

**ITEMS NOTED TO BE ADDRESSED BY GMX WORK PROGRAM TBD**





General Engineering Consultant to the  
Greater Miami Expressway Agency

**GENERAL ENGINEERING CONSULTANT INSPECTION AND  
EVALUATION OF THE MIAMI-DADE COUNTY EXPRESSWAY  
SYSTEM**

**AIRPORT EXPRESSWAY (SR-112): 4.00 MILES  
PHOTOGRAPHIC INVENTORY**

**PHOTO NO.: EB-002  
DATE: 8-6-2025**

**ROADWAY INSPECTION  
LOCATION: MILE MARKER MP 1.2  
EASTBOUND MAINLINE**



**DETERIORATED PAINT ON STEEL BRIDGE/ CLASS V COATING ON CONCRETE  
SURFACES  
(BRIDGE 870238)**

**ITEMS NOTED TO BE ADDRESSED BY GMX WORK PROGRAM TBD**

GMX ANNUAL ROADWAY INSPECTION  
SR 112 WESTBOUND



General Engineering Consultant to the  
Greater Miami Expressway Agency

**GENERAL ENGINEERING CONSULTANT INSPECTION AND  
EVALUATION OF THE MIAMI-DADE COUNTY EXPRESSWAY  
SYSTEM**

**AIRPORT EXPRESSWAY (SR-112): 4.00 MILES  
PHOTOGRAPHIC INVENTORY**

**PHOTO NO.: WB-001  
DATE: 8-6-2025**

**ROADWAY INSPECTION  
LOCATION: MILE MARKER MP 3.95  
WESTBOUND MAINLINE**



**DETERIORATED ASPHALT PAVEMENT**

**ITEM NOTED TO BE ADDRESSED BY GMX WORK PROGRAM 30044**





General Engineering Consultant to the  
Greater Miami Expressway Agency

**GENERAL ENGINEERING CONSULTANT INSPECTION AND  
EVALUATION OF THE MIAMI-DADE COUNTY EXPRESSWAY  
SYSTEM**

**AIRPORT EXPRESSWAY (SR-112): 4.00 MILES  
PHOTOGRAPHIC INVENTORY**

**PHOTO NO.: WB-002  
DATE: 8-6-2025**

**ROADWAY INSPECTION  
LOCATION: MILE MARKER MP 1.2  
WESTBOUND OFF-RAMP TO NW 36<sup>th</sup> St.**



**DETERIORATED ASPHALT PAVEMENT**

**ITEM NOTED TO BE ADDRESSED BY GMX WORK PROGRAM 30044**



General Engineering Consultant to the  
Greater Miami Expressway Agency

**GENERAL ENGINEERING CONSULTANT INSPECTION AND  
EVALUATION OF THE MIAMI-DADE COUNTY EXPRESSWAY  
SYSTEM**

**AIRPORT EXPRESSWAY (SR-112): 4.00 MILES  
PHOTOGRAPHIC INVENTORY**

**PHOTO NO.: WB-003  
DATE: 8-6-2025**

**ROADWAY INSPECTION  
LOCATION: MILE MARKER MP 1.1  
WESTBOUND OFF-RAMP TO NW 36<sup>th</sup> St.**



**OVERGROWN VEGETATION/ DETERIORATED CLASS V COATING  
ON RETAINING WALL**

**ITEM NOTED TO BE ADDRESSED BY GMX MAINTENANCE RFP-23-01  
& WORK PROGRAM TBD**

GMX ANNUAL ROADWAY INSPECTION  
SR 836 EASTBOUND





General Engineering Consultant to the  
Greater Miami Expressway Agency

**GENERAL ENGINEERING CONSULTANT INSPECTION AND  
EVALUATION OF THE MIAMI-DADE COUNTY EXPRESSWAY  
SYSTEM**

**DOLPHIN EXPRESSWAY (SR-836): 14.00 MILES  
PHOTOGRAPHIC INVENTORY**

**PHOTO NO.: EB-001  
DATE: 8-11-2025**

**ROADWAY INSPECTION  
LOCATION: MILE MARKER 0.7  
EASTBOUND MAINLINE**



**DETERIORATED CLASS V COATING**

**ITEM NOTED TO BE ADDRESSED BY GMX WORK PROGRAM TBD**



General Engineering Consultant to the  
Greater Miami Expressway Agency

**GENERAL ENGINEERING CONSULTANT INSPECTION AND  
EVALUATION OF THE MIAMI-DADE COUNTY EXPRESSWAY  
SYSTEM**

**DOLPHIN EXPRESSWAY (SR-836): 14.00 MILES  
PHOTOGRAPHIC INVENTORY**

**PHOTO NO.: EB-002  
DATE: 8-11-2025**

**ROADWAY INSPECTION  
LOCATION: MILE MARKER 3.0  
EASTBOUND MAINLINE**



**DAMAGED PAVEMENT**

**ITEM NOTED TO BE ADDRESSED BY GMX WORK PROGRAM 30044**





General Engineering Consultant to the  
Greater Miami Expressway Agency

**GENERAL ENGINEERING CONSULTANT INSPECTION AND  
EVALUATION OF THE MIAMI-DADE COUNTY EXPRESSWAY  
SYSTEM**

**DOLPHIN EXPRESSWAY (SR-836): 14.00 MILES  
PHOTOGRAPHIC INVENTORY**

**PHOTO NO.: EB-003  
DATE: 8-11-2025**

**ROADWAY INSPECTION  
LOCATION: MILE MARKER 3.2  
EASTBOUND MAINLINE**



**UNEVEN PAVEMENT**

**ITEM NOTED TO BE ADDRESSED BY GMX WORK PROGRAM 30044**





General Engineering Consultant to the  
Greater Miami Expressway Agency

**GENERAL ENGINEERING CONSULTANT INSPECTION AND  
EVALUATION OF THE MIAMI-DADE COUNTY EXPRESSWAY  
SYSTEM**

**DOLPHIN EXPRESSWAY (SR-836): 14.00 MILES  
PHOTOGRAPHIC INVENTORY**

**PHOTO NO.: EB-004  
DATE: 8-11-2025**

**ROADWAY INSPECTION  
LOCATION: MILE MARKER 6.8  
EASTBOUND MAINLINE**



**DETERIORATED BUS LANE STRIPING**

**ITEM NOTED TO BE ADDRESSED BY GMX MAINTENANCE TBD**



General Engineering Consultant to the  
Greater Miami Expressway Agency

**GENERAL ENGINEERING CONSULTANT INSPECTION AND  
EVALUATION OF THE MIAMI-DADE COUNTY EXPRESSWAY  
SYSTEM**

**DOLPHIN EXPRESSWAY (SR-836): 14.00 MILES  
PHOTOGRAPHIC INVENTORY**

**PHOTO NO.: EB-005  
DATE: 8-11-2025**

**ROADWAY INSPECTION  
LOCATION: MILE MARKER 7.0  
EASTBOUND MAINLINE**



**DETERIORATED CHEVRON STRIPING AND ROADWAY STRIPING  
ITEM NOTED TO BE ADDRESSED BY GMX WORK PROGRAM 30033**





General Engineering Consultant to the  
Greater Miami Expressway Agency

**GENERAL ENGINEERING CONSULTANT INSPECTION AND  
EVALUATION OF THE MIAMI-DADE COUNTY EXPRESSWAY  
SYSTEM**

**DOLPHIN EXPRESSWAY (SR-836): 14.00 MILES  
PHOTOGRAPHIC INVENTORY**

**PHOTO NO.: EB-006  
DATE: 8-11-2025**

**ROADWAY INSPECTION  
LOCATION: MILE MARKER 7.4  
EASTBOUND MAINLINE**



**DETERIORATED CHEVRON STRIPING  
(BRIDGE # 870098)**

**ITEM NOTED TO BE ADDRESSED BY GMX WORK PROGRAM 30033**



General Engineering Consultant to the  
Greater Miami Expressway Agency

**GENERAL ENGINEERING CONSULTANT INSPECTION AND  
EVALUATION OF THE MIAMI-DADE COUNTY EXPRESSWAY  
SYSTEM**

**DOLPHIN EXPRESSWAY (SR-836): 14.00 MILES  
PHOTOGRAPHIC INVENTORY**

**PHOTO NO.: EB-007  
DATE: 8-13-2025**

**ROADWAY INSPECTION  
LOCATION: MILE MARKER 8.3  
EASTBOUND MAINLINE**



**DETERIORATED PAINT ON MONOTUB AND STRUCTURE UPRIGHT  
(STRUCTURE #87A258)**

**ITEM NOTED TO BE ADDRESSED BY GMX WORK PROGRAM 30043**





General Engineering Consultant to the  
Greater Miami Expressway Agency

**GENERAL ENGINEERING CONSULTANT INSPECTION AND  
EVALUATION OF THE MIAMI-DADE COUNTY EXPRESSWAY  
SYSTEM**

**DOLPHIN EXPRESSWAY (SR-836): 14.00 MILES  
PHOTOGRAPHIC INVENTORY**

**PHOTO NO.: EB-008  
DATE: 8-13-2025**

**ROADWAY INSPECTION  
LOCATION: MILE MARKER 11.9  
EASTBOUND MAINLINE**



**SKUFF MARKS ON BARRIER WALL**

**ITEM NOTED TO BE ADDRESSED BY GMX WORK PROGRAM TBD**



General Engineering Consultant to the  
Greater Miami Expressway Agency

**GENERAL ENGINEERING CONSULTANT INSPECTION AND  
EVALUATION OF THE MIAMI-DADE COUNTY EXPRESSWAY  
SYSTEM**

**DOLPHIN EXPRESSWAY (SR-836): 14.00 MILES  
PHOTOGRAPHIC INVENTORY**

**PHOTO NO.: EB-009  
DATE: 8-11-2025**

**ROADWAY INSPECTION  
LOCATION: MILE MARKER 3.0  
EASTBOUND MAINLINE**



**DETERIORATED PAINT ON STEEL BRIDGE/ CLASS V COATING ON CONCRETE  
SURFACES  
(BRIDGE 870996)**

**ITEM NOTED TO BE ADDRESSED BY GMX WORK PROGRAM 30064**

GMX ANNUAL ROADWAY INSPECTION  
SR 836 WESTBOUND



General Engineering Consultant to the  
Greater Miami Expressway Agency

**GENERAL ENGINEERING CONSULTANT INSPECTION AND  
EVALUATION OF THE MIAMI-DADE COUNTY EXPRESSWAY  
SYSTEM**

**DOLPHIN EXPRESSWAY (SR-836): 14.00 MILES  
PHOTOGRAPHIC INVENTORY**

**PHOTO NO.: WB-001  
DATE: 8-7-2025**

**ROADWAY INSPECTION  
LOCATION: MILE MARKER 12.4  
WESTBOUND MAINLINE**



**DETERIORATED SURFACE OVERLAY**

**ITEM NOTED TO BE ADDRESSED BY GMX WORK PROGRAM 30044**





General Engineering Consultant to the  
Greater Miami Expressway Agency

**GENERAL ENGINEERING CONSULTANT INSPECTION AND  
EVALUATION OF THE MIAMI-DADE COUNTY EXPRESSWAY  
SYSTEM**

**DOLPHIN EXPRESSWAY (SR-836): 14.00 MILES  
PHOTOGRAPHIC INVENTORY**

**PHOTO NO.: WB-002  
DATE: 8-7-2025**

**ROADWAY INSPECTION  
LOCATION: MILE MARKER 10.9  
WESTBOUND MAINLINE**



**SKUFF MARKS ON BARRIER WALL**

**ITEM NOTED TO BE ADDRESSED BY GMX WORK PROGRAM TBD**



General Engineering Consultant to the  
Greater Miami Expressway Agency

**GENERAL ENGINEERING CONSULTANT INSPECTION AND  
EVALUATION OF THE MIAMI-DADE COUNTY EXPRESSWAY  
SYSTEM**

**DOLPHIN EXPRESSWAY (SR-836): 14.00 MILES  
PHOTOGRAPHIC INVENTORY**

**PHOTO NO.: WB-003  
DATE: 8-7-2025**

**ROADWAY INSPECTION  
LOCATION: MILE MARKER 8.7  
WESTBOUND MAINLINE**



**DETERIORATED SURFACE OVERLAY**

**ITEM NOTED TO BE ADDRESSED BY GMX WORK PROGRAM 30044**



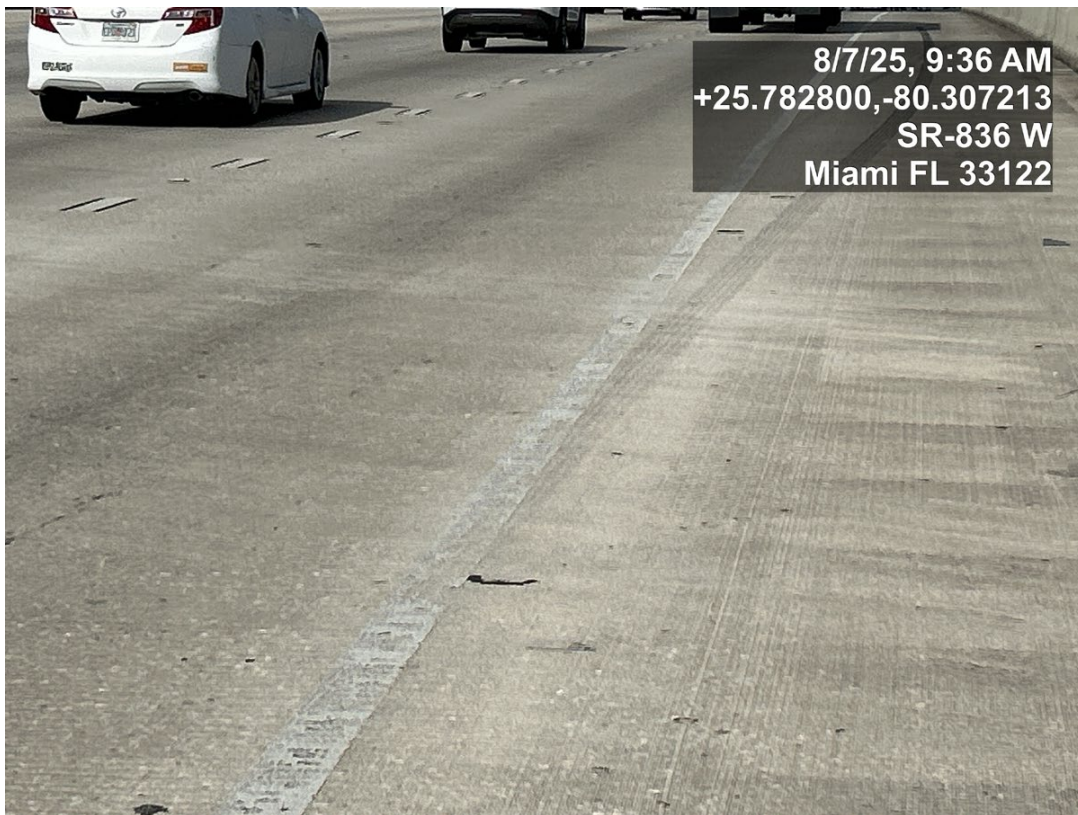
General Engineering Consultant to the  
Greater Miami Expressway Agency

**GENERAL ENGINEERING CONSULTANT INSPECTION AND  
EVALUATION OF THE MIAMI-DADE COUNTY EXPRESSWAY  
SYSTEM**

**DOLPHIN EXPRESSWAY (SR-836): 14.00 MILES  
PHOTOGRAPHIC INVENTORY**

**PHOTO NO.: WB-004  
DATE: 8-7-2025**

**ROADWAY INSPECTION  
LOCATION: MILE MARKER 7.45  
WESTBOUND MAINLINE**



**DETERIORATED STRIPING  
(BRIDGE # 871074)**

**ITEM NOTED TO BE ADDRESSED BY GMX WORK PROGRAM 30033**





General Engineering Consultant to the  
Greater Miami Expressway Agency

**GENERAL ENGINEERING CONSULTANT INSPECTION AND  
EVALUATION OF THE MIAMI-DADE COUNTY EXPRESSWAY  
SYSTEM**

**DOLPHIN EXPRESSWAY (SR-836): 14.00 MILES  
PHOTOGRAPHIC INVENTORY**

**PHOTO NO.: WB-005  
DATE: 8-7-2025**

**ROADWAY INSPECTION  
LOCATION: MILE MARKER 4.6  
WESTBOUND MAINLINE**



**DETERIORATED ASPHALT PAVEMENT**

**ITEM NOTED TO BE ADDRESSED BY GMX WORK PROGRAM 30044**





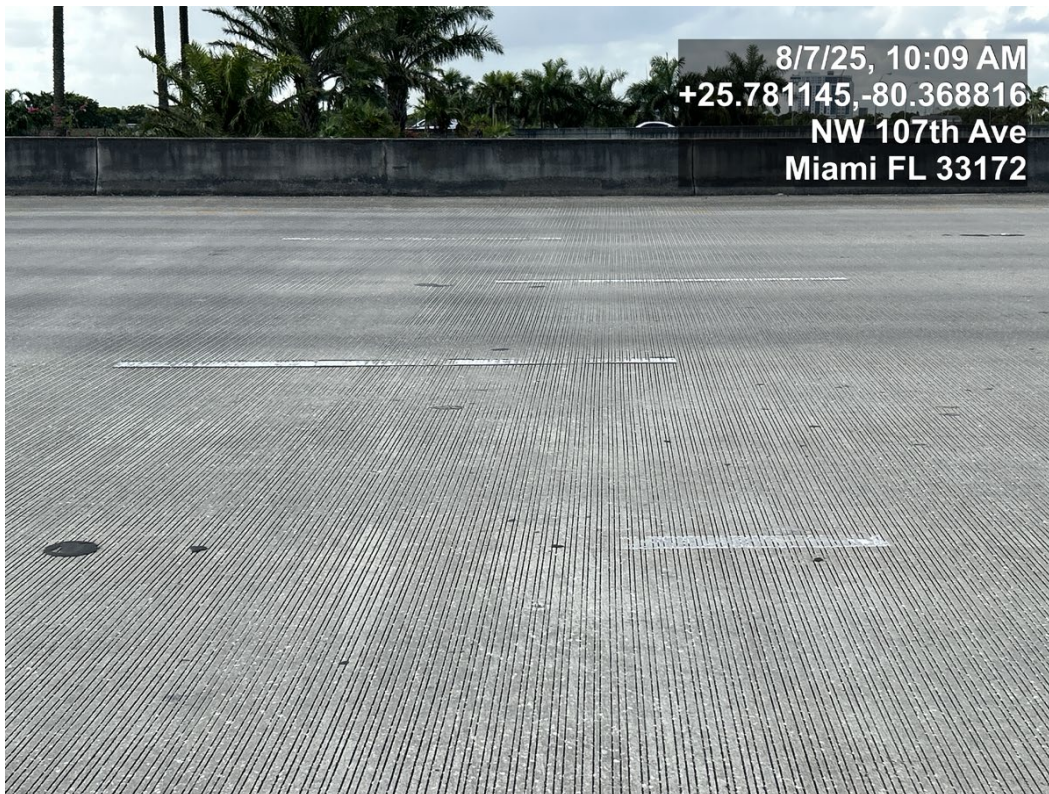
General Engineering Consultant to the  
Greater Miami Expressway Agency

**GENERAL ENGINEERING CONSULTANT INSPECTION AND  
EVALUATION OF THE MIAMI-DADE COUNTY EXPRESSWAY  
SYSTEM**

**DOLPHIN EXPRESSWAY (SR-836): 14.00 MILES  
PHOTOGRAPHIC INVENTORY**

**PHOTO NO.: WB-006  
DATE: 8-7-2025**

**ROADWAY INSPECTION  
LOCATION: MILE MARKER 3.6  
WESTBOUND MAINLINE TO FLA'S TURNPIKE**



**DETERIORATED SKIP LINE  
(BRIDGE # 870997)**

**ITEM NOTED TO BE ADDRESSED BY GMX WORK PROGRAM 30033**



General Engineering Consultant to the  
Greater Miami Expressway Agency

**GENERAL ENGINEERING CONSULTANT INSPECTION AND  
EVALUATION OF THE MIAMI-DADE COUNTY EXPRESSWAY  
SYSTEM**

**DOLPHIN EXPRESSWAY (SR-836): 14.00 MILES  
PHOTOGRAPHIC INVENTORY**

**PHOTO NO.:WB-007  
DATE: 8-7-2025**

**ROADWAY INSPECTION  
LOCATION: MILE MARKER 3.4  
WESTBOUND MAINLINE TO FLA'S TURNPIKE**



**DAMAGED PAVEMENT DUE TO CONCRETE SPILLAGE**

**ITEM NOTED TO BE ADDRESSED BY GMX WORK PROGRAM 30044**





General Engineering Consultant to the  
Greater Miami Expressway Agency

**GENERAL ENGINEERING CONSULTANT INSPECTION AND  
EVALUATION OF THE MIAMI-DADE COUNTY EXPRESSWAY  
SYSTEM**

**DOLPHIN EXPRESSWAY (SR-836): 14.00 MILES  
PHOTOGRAPHIC INVENTORY**

**PHOTO NO.: WB-008  
DATE: 8-7-2025**

**ROADWAY INSPECTION  
LOCATION: MILE MARKER 2.5  
WESTBOUND MAINLINE TO FLA'S TURNPIKE SB**



**CONFLICTING PAVEMENT MARKINGS/ DETERIORATED SKIP LINES  
(BRIDGE # 870998)**

**ITEM NOTED TO BE ADDRESSED BY GMX WORK PROGRAM 30033**





General Engineering Consultant to the  
Greater Miami Expressway Agency

**GENERAL ENGINEERING CONSULTANT INSPECTION AND  
EVALUATION OF THE MIAMI-DADE COUNTY EXPRESSWAY  
SYSTEM**

**DOLPHIN EXPRESSWAY (SR-836): 14.00 MILES  
PHOTOGRAPHIC INVENTORY**

**PHOTO NO.: WB-009**

**DATE: 8-7-2025**

**ROADWAY INSPECTION  
LOCATION: MILE MARKER 4.4  
WESTBOUND MAINLINE**



**DETERIORATED PAVEMENT**

**ITEM NOTED TO BE ADDRESSED BY GMX WORK PROGRAM 30044**



General Engineering Consultant to the  
Greater Miami Expressway Agency

**GENERAL ENGINEERING CONSULTANT INSPECTION AND  
EVALUATION OF THE MIAMI-DADE COUNTY EXPRESSWAY  
SYSTEM**

**DOLPHIN EXPRESSWAY (SR-836): 14.00 MILES  
PHOTOGRAPHIC INVENTORY**

**PHOTO NO.: WB-010  
DATE: 8-7-2025**

**ROADWAY INSPECTION  
LOCATION: MILE MARKER 4.2  
WESTBOUND MAINLINE**



**DETERIORATED PAVEMENT**

**ITEM NOTED TO BE ADDRESSED BY GMX WORK PROGRAM 30044**





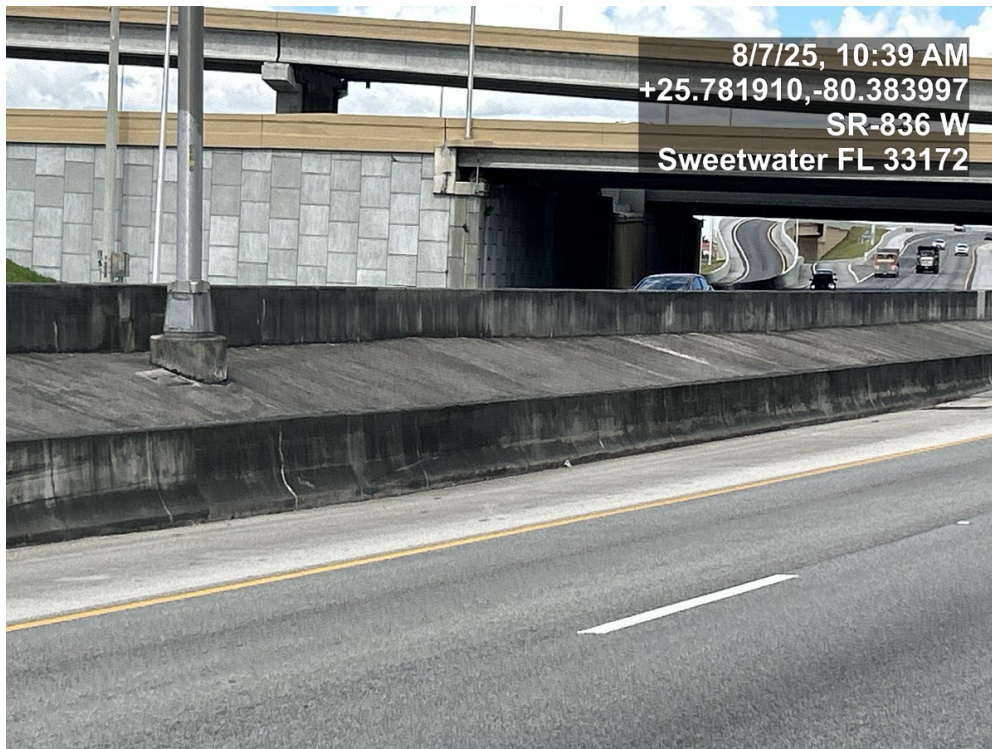
General Engineering Consultant to the  
Greater Miami Expressway Agency

**GENERAL ENGINEERING CONSULTANT INSPECTION AND  
EVALUATION OF THE MIAMI-DADE COUNTY EXPRESSWAY  
SYSTEM**

**DOLPHIN EXPRESSWAY (SR-836): 14.00 MILES  
PHOTOGRAPHIC INVENTORY**

**PHOTO NO.: WB-011  
DATE: 8-7-2025**

**ROADWAY INSPECTION  
LOCATION: MILE MARKER 2.6  
WESTBOUND MAINLINE**



**DETERIORATED CLASS V COATING ON BARRIER WALL AND TRAFFIC  
SEPARATOR**

**ITEM NOTED TO BE ADDRESSED BY GMX WORK PROGRAM TBD**





General Engineering Consultant to the  
Greater Miami Expressway Agency

**GENERAL ENGINEERING CONSULTANT INSPECTION AND  
EVALUATION OF THE MIAMI-DADE COUNTY EXPRESSWAY  
SYSTEM**

**DOLPHIN EXPRESSWAY (SR-836): 14.00 MILES  
PHOTOGRAPHIC INVENTORY**

**PHOTO NO.: WB-012**

**DATE: 8-7-2025**

**ROADWAY INSPECTION**

**LOCATION: MILE MARKER 0.3**

**WESTBOUND OFF-RAMP TO SB NW 137<sup>TH</sup> AVE.**



**DETERIORATED PAVEMENT**

**ITEM NOTED TO BE ADDRESSED BY GMX WORK PROGRAM 30044**



General Engineering Consultant to the  
Greater Miami Expressway Agency

**GENERAL ENGINEERING CONSULTANT INSPECTION AND  
EVALUATION OF THE MIAMI-DADE COUNTY EXPRESSWAY  
SYSTEM**

**DOLPHIN EXPRESSWAY (SR-836): 14.00 MILES  
PHOTOGRAPHIC INVENTORY**

**PHOTO NO.: WB-013  
DATE: 8-7-2025**

**ROADWAY INSPECTION  
LOCATION: MILE MARKER 11.8  
WESTBOUND ON-RAMP FROM NW 27<sup>TH</sup> AVE.**



**PAVEMENT SETTLEMENT ON CURVE INSIDE LANE**

**ITEM NOTED TO BE ADDRESSED BY GMX WORK PROGRAM 30044**





General Engineering Consultant to the  
Greater Miami Expressway Agency

**GENERAL ENGINEERING CONSULTANT INSPECTION AND  
EVALUATION OF THE MIAMI-DADE COUNTY EXPRESSWAY  
SYSTEM**

**DOLPHIN EXPRESSWAY (SR-836): 14.00 MILES  
PHOTOGRAPHIC INVENTORY**

**PHOTO NO.: WB-014  
DATE: 8-11-2025**

**ROADWAY INSPECTION  
LOCATION: MILE MARKER 6.8  
WESTBOUND ON-RAMP FROM NW 72<sup>nd</sup> AVE.**



**DETERIORATED STRIPING ON GORE AND OUTSIDE LANE**

**ITEM NOTED TO BE ADDRESSED BY GMX WORK PROGRAM 30033**





General Engineering Consultant to the  
Greater Miami Expressway Agency

**GENERAL ENGINEERING CONSULTANT INSPECTION AND  
EVALUATION OF THE MIAMI-DADE COUNTY EXPRESSWAY  
SYSTEM**

**DOLPHIN EXPRESSWAY (SR-836): 14.00 MILES  
PHOTOGRAPHIC INVENTORY**

**PHOTO NO.: WB-015  
DATE: 8-11-2025**

**ROADWAY INSPECTION  
LOCATION: MILE MARKER 6.7  
WESTBOUND CD**



**DETERIORATED STRIPING  
(BRIDGE # 871081)**

**ITEM NOTED TO BE ADDRESSED BY GMX WORK PROGRAM 30033**



General Engineering Consultant to the  
Greater Miami Expressway Agency

**GENERAL ENGINEERING CONSULTANT INSPECTION AND  
EVALUATION OF THE MIAMI-DADE COUNTY EXPRESSWAY  
SYSTEM**

**DOLPHIN EXPRESSWAY (SR-836): 14.00 MILES  
PHOTOGRAPHIC INVENTORY**

**PHOTO NO.: WB-016  
DATE: 8-11-2025**

**ROADWAY INSPECTION  
LOCATION: MILE MARKER 6.4  
WESTBOUND CD**



**DETERIORATED PAINT ON MONOTUBE/CLASS V COATING  
ON STRUCTURE UPRIGHT  
(STRUCTURE #87A273)**

**ITEM NOTED TO BE ADDRESSED BY GMX WORK PROGRAM 30047**



General Engineering Consultant to the  
Greater Miami Expressway Agency

**GENERAL ENGINEERING CONSULTANT INSPECTION AND  
EVALUATION OF THE MIAMI-DADE COUNTY EXPRESSWAY  
SYSTEM**

**DOLPHIN EXPRESSWAY (SR-836): 14.00 MILES  
PHOTOGRAPHIC INVENTORY**

**PHOTO NO.: WB-017  
DATE: 8-11-2025**

**ROADWAY INSPECTION  
LOCATION: MILE MARKER 6.2  
WESTBOUND CD**



**DETERIORATED EDGE LINE  
(BRIDGE # 871083)**

**ITEM NOTED TO BE ADDRESSED BY GMX WORK PROGRAM 30033**





General Engineering Consultant to the  
Greater Miami Expressway Agency

**GENERAL ENGINEERING CONSULTANT INSPECTION AND  
EVALUATION OF THE MIAMI-DADE COUNTY EXPRESSWAY  
SYSTEM**

**DOLPHIN EXPRESSWAY (SR-836): 14.00 MILES  
PHOTOGRAPHIC INVENTORY**

**PHOTO NO.: WB-018  
DATE: 8-11-2025**

**ROADWAY INSPECTION  
LOCATION: MILE MARKER 3.8  
WESTBOUND OFF-RAMP TO NB NW 107<sup>TH</sup> AVE.**



**DETERIORATED PAVEMENT**

**ITEM NOTED TO BE ADDRESSED BY GMX WORK PROGRAM 30044**



General Engineering Consultant to the  
Greater Miami Expressway Agency

**GENERAL ENGINEERING CONSULTANT INSPECTION AND  
EVALUATION OF THE MIAMI-DADE COUNTY EXPRESSWAY  
SYSTEM**

**DOLPHIN EXPRESSWAY (SR-836): 14.00 MILES  
PHOTOGRAPHIC INVENTORY**

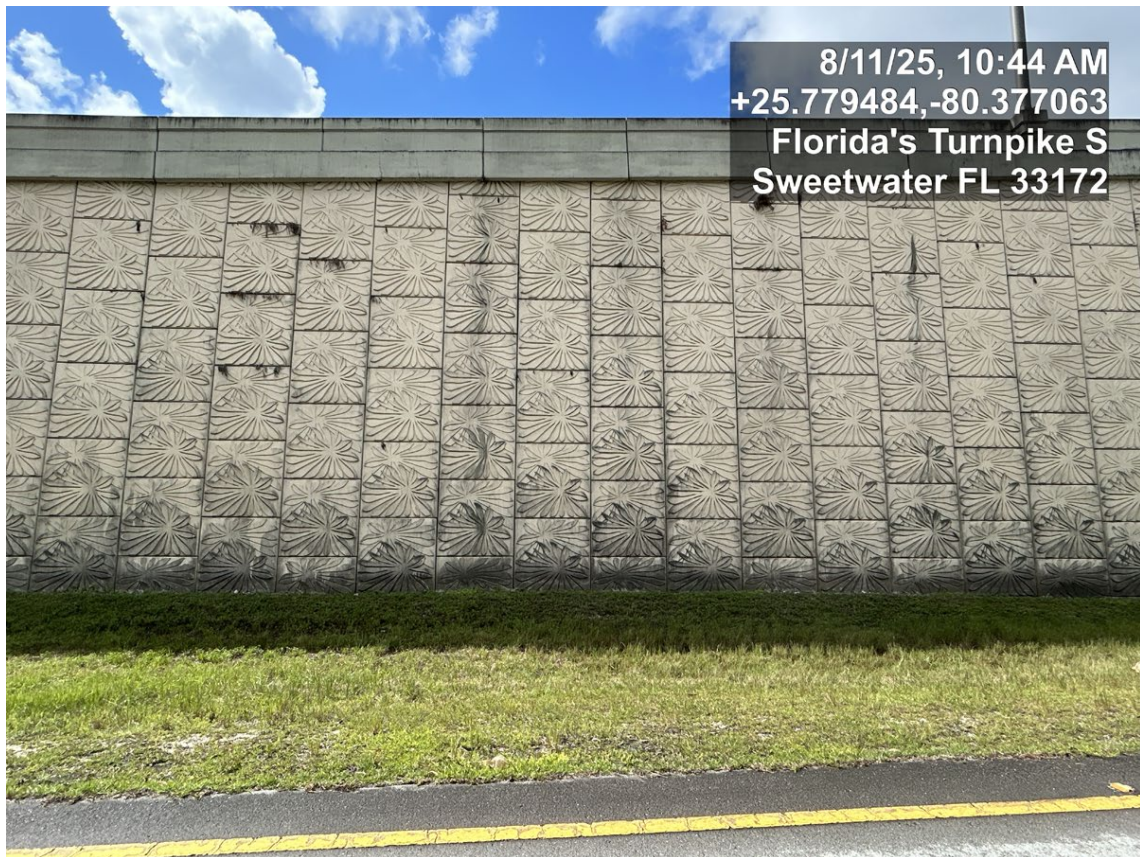
**PHOTO NO.: WB-019**

**DATE: 8-11-2025**

**ROADWAY INSPECTION**

**LOCATION: MILE MARKER 3.2**

**WESTBOUND ON-RAMP FROM NW 107<sup>TH</sup> AVE.**



**DETERIORATED CLASS V COATING ON MSE WALL**

**ITEM NOTED TO BE ADDRESSED BY GMX WORK PROGRAM TBD**

GMX ANNUAL ROADWAY INSPECTION  
SR 874 NORTHBOUND





General Engineering Consultant to the  
Greater Miami Expressway Agency

**GENERAL ENGINEERING CONSULTANT INSPECTION AND  
EVALUATION OF THE MIAMI-DADE COUNTY EXPRESSWAY  
SYSTEM**

**DON SHULA EXPRESSWAY (SR-874): 7.20 MILES  
PHOTOGRAPHIC INVENTORY**

**PHOTO NO.: NB-001  
DATE: 7-21-2025**

**ROADWAY INSPECTION  
LOCATION: MILE MARKER 0.44  
NORTHBOUND MAINLINE**



**DETERIORATED CLASS V COATING ON SLOPE  
(BRIDGE #870460)**

**ITEM NOTED TO BE ADDRESSED BY GMX WORK PROGRAM TBD**



General Engineering Consultant to the  
Greater Miami Expressway Agency

## GENERAL ENGINEERING CONSULTANT INSPECTION AND EVALUATION OF THE MIAMI-DADE COUNTY EXPRESSWAY SYSTEM

### DON SHULA EXPRESSWAY (SR-874): 7.20 MILES PHOTOGRAPHIC INVENTORY

PHOTO NO.: NB-002  
DATE: 7-21-2025

ROADWAY INSPECTION  
LOCATION: MILE MARKER 1.8  
NORTHBOUND MAINLINE



**DETERIORATED PAINT ON MONOTUBE AND CLASS V COATING ON  
STRUCTURE UPRIGHT (STRUCTURE #87A048)**

**ITEM NOTED TO BE ADDRESSED BY GMX WORK PROGRAM 30047**





General Engineering Consultant to the  
Greater Miami Expressway Agency

## GENERAL ENGINEERING CONSULTANT INSPECTION AND EVALUATION OF THE MIAMI-DADE COUNTY EXPRESSWAY SYSTEM

### DON SHULA EXPRESSWAY (SR-874): 7.20 MILES PHOTOGRAPHIC INVENTORY

PHOTO NO.: NB-003  
DATE: 7-21-2025

ROADWAY INSPECTION  
LOCATION: MILE MARKER 3.2  
NORTHBOUND MAINLINE



**DETERIORATED PAINT ON MONOTUBE AND CLASS V COATING ON  
STRUCTURE UPRIGHT (STRUCTURE #87A052)**

**ITEM NOTED TO BE ADDRESSED BY GMX WORK PROGRAM 30047**





General Engineering Consultant to the  
Greater Miami Expressway Agency

**GENERAL ENGINEERING CONSULTANT INSPECTION AND  
EVALUATION OF THE MIAMI-DADE COUNTY EXPRESSWAY  
SYSTEM**

**DON SHULA EXPRESSWAY (SR-874): 7.20 MILES  
PHOTOGRAPHIC INVENTORY**

**PHOTO NO.: NB-004  
DATE: 7-21-2025**

**ROADWAY INSPECTION  
LOCATION: MILE MARKER 3.5  
NORTHBOUND OFF-RAMP TO KENDALL DRIVE**



**DETERIORATED CLASS V COATING ON BARRIER WALL TOP SLAB**

**ITEM NOTED TO BE ADDRESSED BY GMX WORK PROGRAM TBD**



General Engineering Consultant to the  
Greater Miami Expressway Agency

**GENERAL ENGINEERING CONSULTANT INSPECTION AND  
EVALUATION OF THE MIAMI-DADE COUNTY EXPRESSWAY  
SYSTEM**

**DON SHULA EXPRESSWAY (SR-874): 7.20 MILES  
PHOTOGRAPHIC INVENTORY**

**PHOTO NO.: NB-005  
DATE: 7-21-2025**

**ROADWAY INSPECTION  
LOCATION: MILE MARKER 4.0  
NORTHBOUND ON-RAMP FROM KENDALL DRIVE**



**DETERIORATED CLASS V COATING ON MSE WALL**

**ITEM NOTED TO BE ADDRESSED BY GMX WORK PROGRAM TBD**



General Engineering Consultant to the  
Greater Miami Expressway Agency

**GENERAL ENGINEERING CONSULTANT INSPECTION AND  
EVALUATION OF THE MIAMI-DADE COUNTY EXPRESSWAY  
SYSTEM**

**DON SHULA EXPRESSWAY (SR-874): 7.20 MILES  
PHOTOGRAPHIC INVENTORY**

**PHOTO NO.: NB-006  
DATE: 7-21-2025**

**ROADWAY INSPECTION  
LOCATION: MILE MARKER 4.4  
NORTHBOUND ON-RAMP FROM KENDALL DRIVE**



**DETERIORATED CLASS V COATING ON END BENT AND MSE WALL**

**ITEM NOTED TO BE ADDRESSED BY GMX WORK PROGRAM TBD**





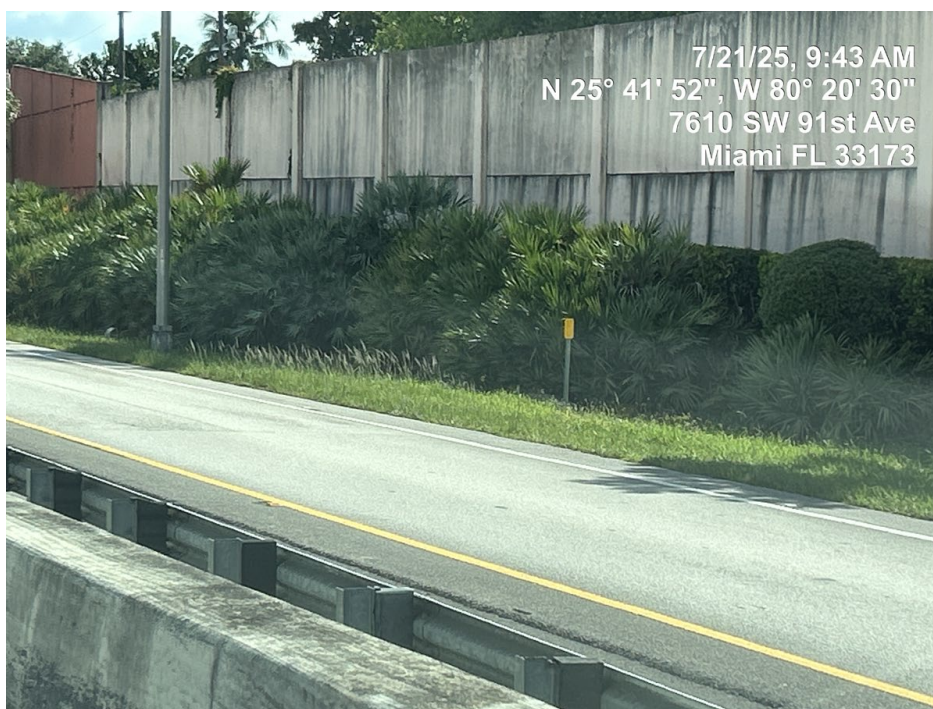
General Engineering Consultant to the  
Greater Miami Expressway Agency

**GENERAL ENGINEERING CONSULTANT INSPECTION AND  
EVALUATION OF THE MIAMI-DADE COUNTY EXPRESSWAY  
SYSTEM**

**DON SHULA EXPRESSWAY (SR-874): 7.20 MILES  
PHOTOGRAPHIC INVENTORY**

**PHOTO NO.: NB-007  
DATE: 7-21-2025**

**ROADWAY INSPECTION  
LOCATION: MILE MARKER 4.7  
NORTHBOUND OFF-RAMP TO KENDALL DRIVE**



**DETERIORATED CLASS V COATING ON SOUND WALL**

**ITEM NOTED TO BE ADDRESSED BY GMX WORK PROGRAM TBD**



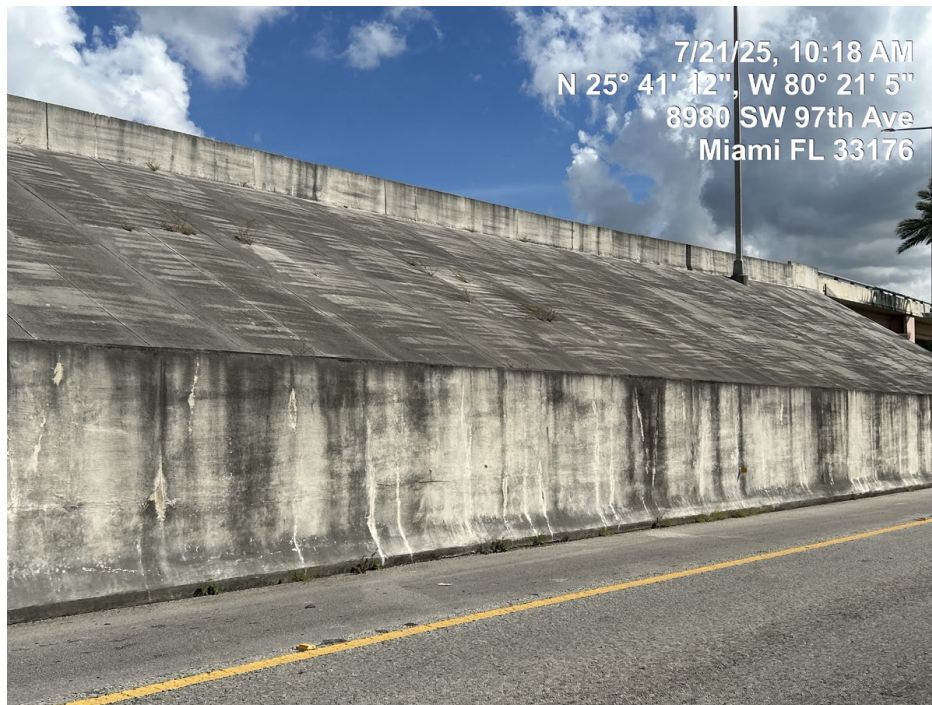
General Engineering Consultant to the  
Greater Miami Expressway Agency

**GENERAL ENGINEERING CONSULTANT INSPECTION AND  
EVALUATION OF THE MIAMI-DADE COUNTY EXPRESSWAY  
SYSTEM**

**DON SHULA EXPRESSWAY (SR-874): 7.20 MILES  
PHOTOGRAPHIC INVENTORY**

**PHOTO NO.: NB-008  
DATE: 7-21-2025**

**ROADWAY INSPECTION  
LOCATION: MILE MARKER 3.6  
NORTHBOUND OFF-RAMP FROM KENDALL DRIVE**



**DETERIORATED CLASS V COATING ON RETAINING WALL**

**ITEM NOTED TO BE ADDRESSED BY GMX WORK PROGRAM TBD**

GMX ANNUAL ROADWAY INSPECTION  
SR 874 SOUTHBOUND





General Engineering Consultant to the  
Greater Miami Expressway Agency

**GENERAL ENGINEERING CONSULTANT INSPECTION AND  
EVALUATION OF THE MIAMI-DADE COUNTY EXPRESSWAY  
SYSTEM**

**DON SHULA EXPRESSWAY (SR-874): 7.20 MILES  
PHOTOGRAPHIC INVENTORY**

**PHOTO NO.: SB-001  
DATE: 7-18-2025**

**ROADWAY INSPECTION  
LOCATION: MILE MARKER 6.28  
SOUTHBOUND MAINLINE**



**DETERIORATED PAVEMENT**

**ITEM NOTED TO BE ADDRESSED BY GMX WORK PROGRAM 30044**



General Engineering Consultant to the  
Greater Miami Expressway Agency

**GENERAL ENGINEERING CONSULTANT INSPECTION AND  
EVALUATION OF THE MIAMI-DADE COUNTY EXPRESSWAY  
SYSTEM**

**DON SHULA EXPRESSWAY (SR-874): 7.20 MILES  
PHOTOGRAPHIC INVENTORY**

**PHOTO NO.: SB-002  
DATE: 7-18-2025**

**ROADWAY INSPECTION  
LOCATION: MILE MARKER 6.1  
SOUTHBOUND MAINLINE**



**DETERIORATED CLASS V COATING ON SOUND WALL**

**ITEM NOTED TO BE ADDRESSED BY GMX WORK PROGRAM TBD**



General Engineering Consultant to the  
Greater Miami Expressway Agency

**GENERAL ENGINEERING CONSULTANT INSPECTION AND  
EVALUATION OF THE MIAMI-DADE COUNTY EXPRESSWAY  
SYSTEM**

**DON SHULA EXPRESSWAY (SR-874): 7.20 MILES  
PHOTOGRAPHIC INVENTORY**

**PHOTO NO.: SB-003  
DATE: 7-18-2025**

**ROADWAY INSPECTION  
LOCATION: MILE MARKER 6.0  
SOUTHBOUND MAINLINE**



**SKUFF MARKS ON BARRIER WALL AND DETERIORATED CLASS V COATING ON  
ITEM NOTED TO BE ADDRESSED BY GMX WORK PROGRAM TBD**





General Engineering Consultant to the  
Greater Miami Expressway Agency

**GENERAL ENGINEERING CONSULTANT INSPECTION AND  
EVALUATION OF THE MIAMI-DADE COUNTY EXPRESSWAY  
SYSTEM**

**DON SHULA EXPRESSWAY (SR-874): 7.20 MILES  
PHOTOGRAPHIC INVENTORY**

**PHOTO NO.: SB-004  
DATE: 7-18-2025**

**ROADWAY INSPECTION  
LOCATION: MILE MARKER 5.72  
SOUTHBOUND MAINLINE**



**DETERIORATED PAINT ON MONOTUBE AND CLASS V COATING ON  
STRUCTURE UPRIGHT (STRUCTURE # 87A134)**

**ITEM NOTED TO BE ADDRESSED BY GMX WORK PROGRAM 30047**



General Engineering Consultant to the  
Greater Miami Expressway Agency

# GENERAL ENGINEERING CONSULTANT INSPECTION AND EVALUATION OF THE MIAMI-DADE COUNTY EXPRESSWAY SYSTEM

## DON SHULA EXPRESSWAY (SR-874): 7.20 MILES PHOTOGRAPHIC INVENTORY

PHOTO NO.: SB-005  
DATE: 7-18-2025

ROADWAY INSPECTION  
LOCATION: MILE MARKER 3.06  
SOUTHBOUND MAINLINE



**DETERIORATED PAINT ON UPRIGHT**

**ITEM NOTED TO BE ADDRESSED BY GMX WORK PROGRAM 30043**





General Engineering Consultant to the  
Greater Miami Expressway Agency

# GENERAL ENGINEERING CONSULTANT INSPECTION AND EVALUATION OF THE MIAMI-DADE COUNTY EXPRESSWAY SYSTEM

## DON SHULA EXPRESSWAY (SR-874): 7.20 MILES PHOTOGRAPHIC INVENTORY

PHOTO NO.: SB-006  
DATE: 7-18-2025

ROADWAY INSPECTION  
LOCATION: MILE MARKER 2.76  
SOUTHBOUND MAINLINE



**DETERIORATED PAINT ON SIGN STRUCTURE MONOTUBE AND CLASS V ON  
STRUCTURE UPRIGHT (STRUCTURE #87S938)**

**ITEM NOTED TO BE ADDRESSED BY GMX WORK PROGRAM NO 30043**





General Engineering Consultant to the  
Greater Miami Expressway Agency

**GENERAL ENGINEERING CONSULTANT INSPECTION AND  
EVALUATION OF THE MIAMI-DADE COUNTY EXPRESSWAY  
SYSTEM**

**DON SHULA EXPRESSWAY (SR-874): 7.20 MILES  
PHOTOGRAPHIC INVENTORY**

**PHOTO NO.: SB-007  
DATE: 7-18-2025**

**ROADWAY INSPECTION  
LOCATION: MILE MARKER 2.4  
SOUTHBOUND MAINLINE**



**DETERIORATED CLASS V COATING ON BARRIER AND MSE WALLS**

**ITEM NOTED TO BE ADDRESSED BY GMX WORK PROGRAM TBD**



General Engineering Consultant to the  
Greater Miami Expressway Agency

# GENERAL ENGINEERING CONSULTANT INSPECTION AND EVALUATION OF THE MIAMI-DADE COUNTY EXPRESSWAY SYSTEM

## DON SHULA EXPRESSWAY (SR-874): 7.20 MILES PHOTOGRAPHIC INVENTORY

PHOTO NO.: SB-008  
DATE: 7-18-2025

ROADWAY INSPECTION  
LOCATION: MILE MARKER 1.32  
SOUTHBOUND MAINLINE



**DETERIORATED PAINT ON MONOTUBE AND CLASS V COATING ON UPRIGHT  
(STRUCTURE #87S937)**

**ITEM NOTED TO BE ADDRESSED BY GMX WORK PROGRAM 30043**



General Engineering Consultant to the  
Greater Miami Expressway Agency

**GENERAL ENGINEERING CONSULTANT INSPECTION AND  
EVALUATION OF THE MIAMI-DADE COUNTY EXPRESSWAY  
SYSTEM**

**DON SHULA EXPRESSWAY (SR-874): 7.20 MILES  
PHOTOGRAPHIC INVENTORY**

**PHOTO NO.: SB-009  
DATE: 7-18-2025**

**ROADWAY INSPECTION  
LOCATION: MILE MARKER 0.6  
SOUTHBOUND MAINLINE**



**IMPROPER MILE MARKER NUMBERING/LOCATION**

**ITEM NOTED TO BE ADDRESSED BY GMX MAINTENANCE ITB-23-17**





General Engineering Consultant to the  
Greater Miami Expressway Agency

**GENERAL ENGINEERING CONSULTANT INSPECTION AND  
EVALUATION OF THE MIAMI-DADE COUNTY EXPRESSWAY  
SYSTEM**

**DON SHULA EXPRESSWAY (SR-874): 7.20 MILES  
PHOTOGRAPHIC INVENTORY**

**PHOTO NO.: SB-010  
DATE: 7-18-2025**

**ROADWAY INSPECTION  
LOCATION: MILE MARKER 2.3  
SOUTHBOUND OFF-RAMP FROM KILLIAN PKWY.**



**DETERIORATED STRIPPING MISSING RPM's**

**ITEM NOTED TO BE ADDRESSED BY GMX WORK PROGRAM 30033**



General Engineering Consultant to the  
Greater Miami Expressway Agency

# GENERAL ENGINEERING CONSULTANT INSPECTION AND EVALUATION OF THE MIAMI-DADE COUNTY EXPRESSWAY SYSTEM

## DON SHULA EXPRESSWAY (SR-874): 7.20 MILES PHOTOGRAPHIC INVENTORY

PHOTO NO.: SB-011  
DATE: 7-18-2025

ROADWAY INSPECTION  
LOCATION: MILE MARKER 2.3  
SOUTHBOUND OFF-RAMP FROM KILLIAN PKWY.



**DETERIORATED CLASS V COATING ON BARRIER WALL**

**ITEM NOTED TO BE ADDRESSED BY GMX WORK PROGRAM TBD**





General Engineering Consultant to the  
Greater Miami Expressway Agency

**GENERAL ENGINEERING CONSULTANT INSPECTION AND  
EVALUATION OF THE MIAMI-DADE COUNTY EXPRESSWAY  
SYSTEM**

**DON SHULA EXPRESSWAY (SR-874): 7.20 MILES  
PHOTOGRAPHIC INVENTORY**

**PHOTO NO.: SB-012  
DATE: 7-18-2025**

**ROADWAY INSPECTION  
LOCATION: MILE MARKER 2.3  
SOUTHBOUND OFF-RAMP TO KILLIAN PARKWAY**



**DETERIORATED PAINT ON MONOTUBE AND CLASS V COATING ON UPRIGHT**

**ITEM NOTED TO BE ADDRESSED BY GMX WORK PROGRAM 30047**



GMX ANNUAL ROADWAY INSPECTION  
SR 878 EASTBOUND



General Engineering Consultant to the  
Greater Miami Expressway Agency

# GENERAL ENGINEERING CONSULTANT INSPECTION AND EVALUATION OF THE MIAMI-DADE COUNTY EXPRESSWAY SYSTEM

## SNAPPER CREEK EXPRESSWAY (SR-878): 3.20 MILES PHOTOGRAPHIC INVENTORY

**PHOTO NO.: EB-001**  
**DATE: 7-15-2025**

**ROADWAY INSPECTION**  
**LOCATION: MILE MARKER 0.0**  
**EASTBOUND ON-RAMP**



**DETERIOTATED PAVEMENT MARKINGS AND PAVEMENT MESSAGE**

**ITEM NOTED TO BE ADDRESSED BY GMX WORK PROGRAM 30033**





General Engineering Consultant to the  
Greater Miami Expressway Agency

# GENERAL ENGINEERING CONSULTANT INSPECTION AND EVALUATION OF THE MIAMI-DADE COUNTY EXPRESSWAY SYSTEM

## SNAPPER CREEK EXPRESSWAY (SR-878): 3.20 MILES PHOTOGRAPHIC INVENTORY

**PHOTO NO.: EB-002**  
**DATE: 7-15-2025**

**ROADWAY INSPECTION**  
**LOCATION: MILE MARKER 0.9**  
**EASTBOUND ON-RAMP**



**DETERIORATED PAINT ON MONOTUBE AND CLASS V ON UPRIGHT**

**ITEM NOTED TO BE ADDRESSED BY GMX WORK PROGRAM NO 30043**





General Engineering Consultant to the  
Greater Miami Expressway Agency

**GENERAL ENGINEERING CONSULTANT INSPECTION AND  
EVALUATION OF THE MIAMI-DADE COUNTY EXPRESSWAY  
SYSTEM**

**SNAPPER CREEK EXPRESSWAY (SR-878): 3.20 MILES  
PHOTOGRAPHIC INVENTORY**

**PHOTO NO.: EB-003  
DATE: 07-15-2025**

**ROADWAY INSPECTION  
LOCATION: MILE MARKER 3.90  
EASTBOUND ON-RAMP**



**DETERIORATED PAVEMENT MARKINGS**

**ITEM NOTED TO BE ADDRESSED BY GMX WORK PROGRAM 30033**



General Engineering Consultant to the  
Greater Miami Expressway Agency

**GENERAL ENGINEERING CONSULTANT INSPECTION AND  
EVALUATION OF THE MIAMI-DADE COUNTY EXPRESSWAY  
SYSTEM**

**SNAPPER CREEK EXPRESSWAY (SR-878): 3.20 MILES  
PHOTOGRAPHIC INVENTORY**

**PHOTO NO.: EB-004  
DATE: 7-15-2025**

**ROADWAY INSPECTION  
LOCATION: MILE MARKER 0.7  
EASTBOUND MAINLINE**



**DETERIORATED CLASS V COATING ON SOUND WALL**

**ITEM NOTED TO BE ADDRESSED BY GMX WORK PROGRAM TBD**





General Engineering Consultant to the  
Greater Miami Expressway Agency

# GENERAL ENGINEERING CONSULTANT INSPECTION AND EVALUATION OF THE MIAMI-DADE COUNTY EXPRESSWAY SYSTEM

## SNAPPER CREEK EXPRESSWAY (SR-878): 3.20 MILES PHOTOGRAPHIC INVENTORY

**PHOTO NO.: EB-005**  
**DATE: 7-15-2025**

**ROADWAY INSPECTION**  
**LOCATION: MILE MARKER 0.9**  
**EASTBOUND MAINLINE**



**DETERIORATED PAINT ON GANTRY MONOTUBE AND CLASS V ON UPRIGHT**

**ITEM NOTED TO BE ADDRESSED BY GMX WORK PROGRAM 30043**





General Engineering Consultant to the  
Greater Miami Expressway Agency

**GENERAL ENGINEERING CONSULTANT INSPECTION AND  
EVALUATION OF THE MIAMI-DADE COUNTY EXPRESSWAY  
SYSTEM**

**SNAPPER CREEK EXPRESSWAY (SR-878): 3.20 MILES  
PHOTOGRAPHIC INVENTORY**

**PHOTO NO.: EB-006  
DATE: 7-15-2025**

**ROADWAY INSPECTION  
LOCATION: MILE MARKER 1.4  
EASTBOUND MAINLINE**



**DETERIORATED PAVEMENT**

**ITEM NOTED TO BE ADDRESSED BY GMX WORK PROGRAM 30044**





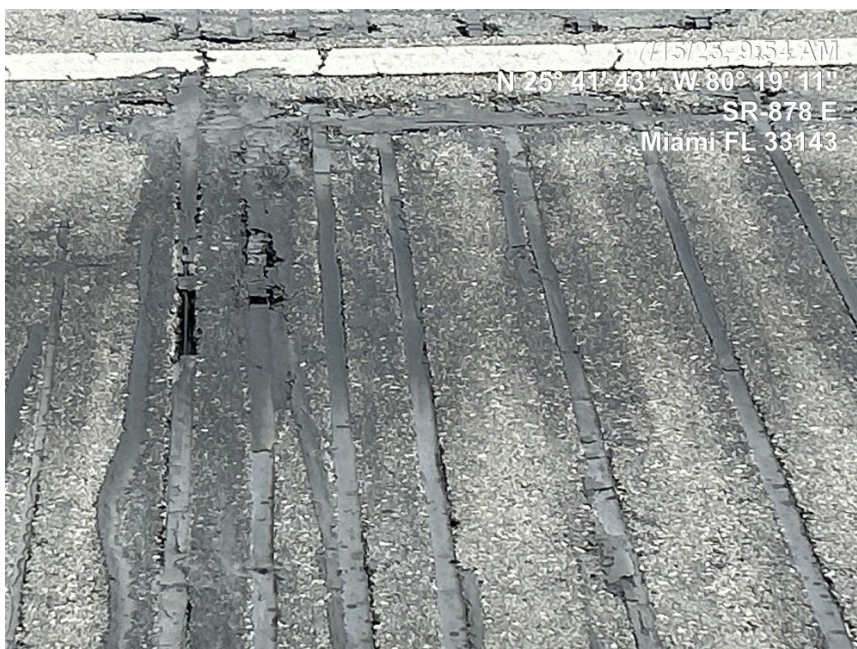
General Engineering Consultant to the  
Greater Miami Expressway Agency

**GENERAL ENGINEERING CONSULTANT INSPECTION AND  
EVALUATION OF THE MIAMI-DADE COUNTY EXPRESSWAY  
SYSTEM**

**SNAPPER CREEK EXPRESSWAY (SR-878): 3.20 MILES  
PHOTOGRAPHIC INVENTORY**

**PHOTO NO.: EB-007  
DATE: 7-15-2025**

**ROADWAY INSPECTION  
LOCATION: MILE MARKER 2.15  
EASTBOUND MAINLINE**



**DETERIORATED SEALANT ON GANTRY LOOP DETECTORS**

**ITEM NOTED TO BE ADDRESSED BY GMX ITS**





General Engineering Consultant to the  
Greater Miami Expressway Agency

**GENERAL ENGINEERING CONSULTANT INSPECTION AND  
EVALUATION OF THE MIAMI-DADE COUNTY EXPRESSWAY  
SYSTEM**

**SNAPPER CREEK EXPRESSWAY (SR-878): 3.20 MILES  
PHOTOGRAPHIC INVENTORY**

**PHOTO NO.: EB-008  
DATE: 7-15-2025**

**ROADWAY INSPECTION  
LOCATION: MILE MARKER 3.0 MILES  
EASTBOUND MAINLINE**



**DETERIORATED CLASS V COATING ON BRIDGE (STRUCTURE # 870599)  
(TYPICAL THROUGHOUT THIS CORRIDOR)**

**ITEM NOTED TO BE ADDRESSED BY GMX WORK PROGRAM TBD**



GMX ANNUAL ROADWAY INSPECTION  
SR 878 WESTBOUND



General Engineering Consultant to the  
Greater Miami Expressway Agency

**GENERAL ENGINEERING CONSULTANT INSPECTION AND  
EVALUATION OF THE MIAMI-DADE COUNTY EXPRESSWAY  
SYSTEM**

**SNAPPER CREEK EXPRESSWAY (SR-878): 3.20 MILES  
PHOTOGRAPHIC INVENTORY**

**PHOTO NO.: WB-001  
DATE: 7-15-2025**

**ROADWAY INSPECTION  
LOCATION: MILE MARKER 3.2  
WESTBOUND MAINLINE**



**DETERIORATED PAVEMENT**

**ITEM NOTED TO BE ADDRESSED BY GMX WORK PROGRAM NO 30044**





General Engineering Consultant to the  
Greater Miami Expressway Agency

**GENERAL ENGINEERING CONSULTANT INSPECTION AND  
EVALUATION OF THE MIAMI-DADE COUNTY EXPRESSWAY  
SYSTEM**

**SNAPPER CREEK EXPRESSWAY (SR-878): 3.20 MILES  
PHOTOGRAPHIC INVENTORY**

**PHOTO NO.: WB-002  
DATE: 7-15-2025**

**ROADWAY INSPECTION  
LOCATION: MILE MARKER 2.12  
WESTBOUND MAINLINE**



**DETERIORATED PAINT ON GANTRY MONOTUBE AND CLASS V ON UPRIGHT**

**ITEM NOTED TO BE ADDRESSED BY GMX WORK PROGRAM 30043**





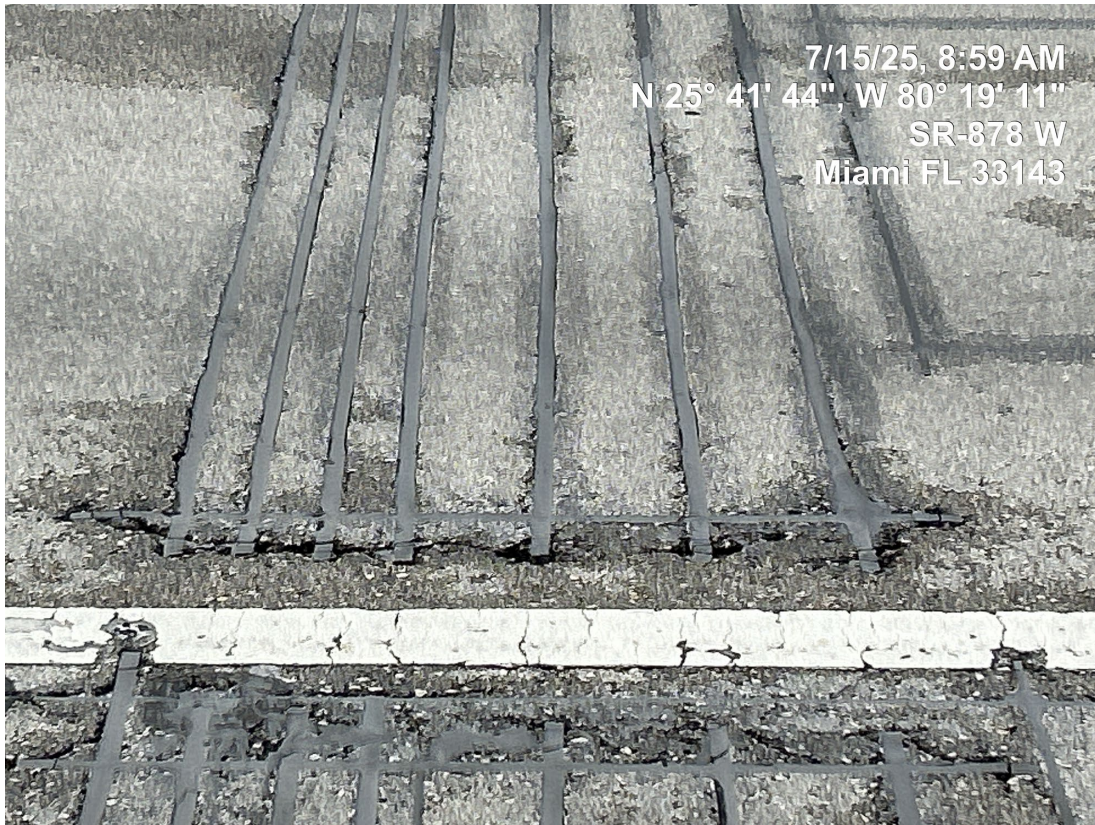
General Engineering Consultant to the  
Greater Miami Expressway Agency

**GENERAL ENGINEERING CONSULTANT INSPECTION AND  
EVALUATION OF THE MIAMI-DADE COUNTY EXPRESSWAY  
SYSTEM**

**SNAPPER CREEK EXPRESSWAY (SR-878): 3.20 MILES  
PHOTOGRAPHIC INVENTORY**

**PHOTO NO.: WB-003  
DATE: 7-15-2025**

**ROADWAY INSPECTION  
LOCATION: MILE MARKER 2.12  
WESTBOUND MAINLINE**



**DETERIORATED SEALANT ON GANTRY LOOP DETECTORS**

**ITEM NOTED TO BE ADDRESSED BY GMX ITS**





General Engineering Consultant to the  
Greater Miami Expressway Agency

**GENERAL ENGINEERING CONSULTANT INSPECTION AND  
EVALUATION OF THE MIAMI-DADE COUNTY EXPRESSWAY  
SYSTEM**

**SNAPPER CREEK EXPRESSWAY (SR-878): 3.20 MILES  
PHOTOGRAPHIC INVENTORY**

**PHOTO NO.: WB-004  
DATE: 7-15-2025**

**ROADWAY INSPECTION  
LOCATION: MILE MARKER 2.0  
WESTBOUND MAINLINE**



**DETERIORATED CLASS V COATING ON BARRIER WALL**

**ITEM NOTED TO BE ADDRESSED BY GMX WORK PROGRAM TBD**





General Engineering Consultant to the  
Greater Miami Expressway Agency

**GENERAL ENGINEERING CONSULTANT INSPECTION AND  
EVALUATION OF THE MIAMI-DADE COUNTY EXPRESSWAY  
SYSTEM**

**SNAPPER CREEK EXPRESSWAY (SR-878): 3.20 MILES  
PHOTOGRAPHIC INVENTORY**

**PHOTO NO.: WB-005  
DATE: 7-15-2025**

**ROADWAY INSPECTION  
LOCATION: MILE MARKER 0.2 to 0.6  
WESTBOUND MAINLINE**



**DETERIORATED PAINT ON DMS SIGN STRUCTURE  
(STRUCTURE #87A329)**

**ITEM NOTED TO BE ADDRESSED BY GMX WORK PROGRAM 30043**





General Engineering Consultant to the  
Greater Miami Expressway Agency

**GENERAL ENGINEERING CONSULTANT INSPECTION AND  
EVALUATION OF THE MIAMI-DADE COUNTY EXPRESSWAY  
SYSTEM**

**SNAPPER CREEK EXPRESSWAY (SR-878): 3.20 MILES  
PHOTOGRAPHIC INVENTORY**

**PHOTO NO.: WB-006  
DATE: 7-15-2025**

**ROADWAY INSPECTION  
LOCATION: MILE MARKER 1.53  
WESTBOUND MAINLINE**



**DETERIORATED CLASS V COAT PAINTING ON SIGN STRUCTURE UPRIGHT & PAINT  
ON MONOTUBE (STRUCTURE #87S944)**

**ITEM NOTED TO BE ADDRESSED BY GMX WORK PROGRAM 30047**



General Engineering Consultant to the  
Greater Miami Expressway Agency

**GENERAL ENGINEERING CONSULTANT INSPECTION AND  
EVALUATION OF THE MIAMI-DADE COUNTY EXPRESSWAY  
SYSTEM**

**SNAPPER CREEK EXPRESSWAY (SR-878): 3.20 MILES  
PHOTOGRAPHIC INVENTORY**

**PHOTO NO.: WB-007  
DATE: 7-15-2025**

**ROADWAY INSPECTION  
LOCATION: MILE MARKER 0.7  
WESTBOUND MAINLINE**



**DERIORATED CLASS V COATING ON BRIDGE #870521  
(TYPICAL THROUGHOUT THIS CORRIDOR)**

**ITEM NOTED TO BE ADDRESSED BY GMX WORK PROGRAM TBD**

GMX ANNUAL ROADWAY INSPECTION  
SR 924 EASTBOUND





General Engineering Consultant to the  
Greater Miami Expressway Agency

**GENERAL ENGINEERING CONSULTANT INSPECTION AND  
EVALUATION OF THE MIAMI-DADE COUNTY EXPRESSWAY  
SYSTEM**

**GRATIGNY PARKWAY (SR-924): 5.37 MILES  
PHOTOGRAPHIC INVENTORY**

**PHOTO NO.: EB-001  
DATE: 7-29-2025**

**ROADWAY INSPECTION  
LOCATION: MILE MARKER 0.4  
EASTBOUND MAINLINE**



**DETERIORATED CLASS V COATING ON MEDIAN BARRIER WALL  
ITEM NOTED TO BE ADDRESSED BY GMX WORK PROGRAM TBD**



General Engineering Consultant to the  
Greater Miami Expressway Agency

**GENERAL ENGINEERING CONSULTANT INSPECTION AND  
EVALUATION OF THE MIAMI-DADE COUNTY EXPRESSWAY  
SYSTEM**

**GRATIGNY PARKWAY (SR-924): 5.37 MILES  
PHOTOGRAPHIC INVENTORY**

**PHOTO NO.: EB-002  
DATE: 7-29-2025**

**ROADWAY INSPECTION  
LOCATION: MILE MARKER 1.4  
EASTBOUND MAINLINE**



**DETERIORATED CLASS V COATING ON BARRIER WALL AND SOUNDWALL**

**ITEM NOTED TO BE ADDRESSED BY GMX WORK PROGRAM TBD**





General Engineering Consultant to the  
Greater Miami Expressway Agency

**GENERAL ENGINEERING CONSULTANT INSPECTION AND  
EVALUATION OF THE MIAMI-DADE COUNTY EXPRESSWAY  
SYSTEM**

**GRATIGNY PARKWAY (SR-924): 5.37 MILES  
PHOTOGRAPHIC INVENTORY**

**PHOTO NO.: EB-003  
DATE: 7-29-2025**

**ROADWAY INSPECTION  
LOCATION: MILE MARKER 1.4  
EASTBOUND MAINLINE**



**DETERIORATED PAVEMENT MARKINGS**

**ITEM NOTED TO BE ADDRESSED BY GMX WORK PROGRAM 30033**





General Engineering Consultant to the  
Greater Miami Expressway Agency

**GENERAL ENGINEERING CONSULTANT INSPECTION AND  
EVALUATION OF THE MIAMI-DADE COUNTY EXPRESSWAY  
SYSTEM**

**GRATIGNY PARKWAY (SR-924): 5.37 MILES  
PHOTOGRAPHIC INVENTORY**

**PHOTO NO.: EB-004  
DATE: 7-29-2025**

**ROADWAY INSPECTION  
LOCATION: MILE MARKER 4.0  
EASTBOUND MAINLINE**



**DETERIORATED PAVEMENT MARKINGS**

**ITEM NOTED TO BE ADDRESSED BY GMX WORK PROGRAM 30033**



General Engineering Consultant to the  
Greater Miami Expressway Agency

**GENERAL ENGINEERING CONSULTANT INSPECTION AND  
EVALUATION OF THE MIAMI-DADE COUNTY EXPRESSWAY  
SYSTEM**

**GRATIGNY PARKWAY (SR-924): 5.37 MILES  
PHOTOGRAPHIC INVENTORY**

**PHOTO NO.: EB-005  
DATE: 7-29-2025**

**ROADWAY INSPECTION  
LOCATION: MILE MARKER 4.30  
EASTBOUND MAINLINE**



7/29/25, 10:38 AM  
N 25° 52' 58", W 80° 15' 36"  
SR-924 E  
Opa-locka FL 33013

**DETERIORATED SKIP LINES (BRIDGE #870740)**

**ITEM NOTED TO BE ADDRESSED BY GMX WORK PROGRAM 30033**





General Engineering Consultant to the  
Greater Miami Expressway Agency

**GENERAL ENGINEERING CONSULTANT INSPECTION AND  
EVALUATION OF THE MIAMI-DADE COUNTY EXPRESSWAY  
SYSTEM**

**GRATIGNY PARKWAY (SR-924): 5.37 MILES  
PHOTOGRAPHIC INVENTORY**

**PHOTO NO.: EB-006  
DATE: 7-29-2025**

**ROADWAY INSPECTION  
LOCATION: MILE MARKER 4.84  
EASTBOUND MAINLINE**



**DAMAGED PAVEMENT**

**ITEM NOTED TO BE ADDRESSED BY GMX WORK PROGRAM 30044**





General Engineering Consultant to the  
Greater Miami Expressway Agency

**GENERAL ENGINEERING CONSULTANT INSPECTION AND  
EVALUATION OF THE MIAMI-DADE COUNTY EXPRESSWAY  
SYSTEM**

**GRATIGNY PARKWAY (SR-924): 5.37 MILES  
PHOTOGRAPHIC INVENTORY**

**PHOTO NO.: EB-007  
DATE: 7-29-2025**

**ROADWAY INSPECTION  
LOCATION: MILE MARKER 2.0  
EASTBOUND OFF-RAMP TO NW 57<sup>th</sup> Ave.**



**DETERIORATED PAVEMENT**

**ITEM NOTED TO BE ADDRESSED BY GMX WORK PROGRAM 30044**

GMX ANNUAL ROADWAY INSPECTION  
SR 924 WESTBOUND



General Engineering Consultant to the  
Greater Miami Expressway Agency

**GENERAL ENGINEERING CONSULTANT INSPECTION AND  
EVALUATION OF THE MIAMI-DADE COUNTY EXPRESSWAY  
SYSTEM**

**GRATIGNY PARKWAY (SR-924): 5.37 MILES  
PHOTOGRAPHIC INVENTORY**

**PHOTO NO.: WB-001  
DATE: 7-29-2025**

**ROADWAY INSPECTION  
LOCATION: MILE MARKER 4.8 MILES  
WESTBOUND MAINLINE**



**PAVEMENT SETTLEMENT AT LATERAL PIPE CROSSING**

**ITEM NOTED TO BE ADDRESSED BY GMX WORK PROGRAM 30044**





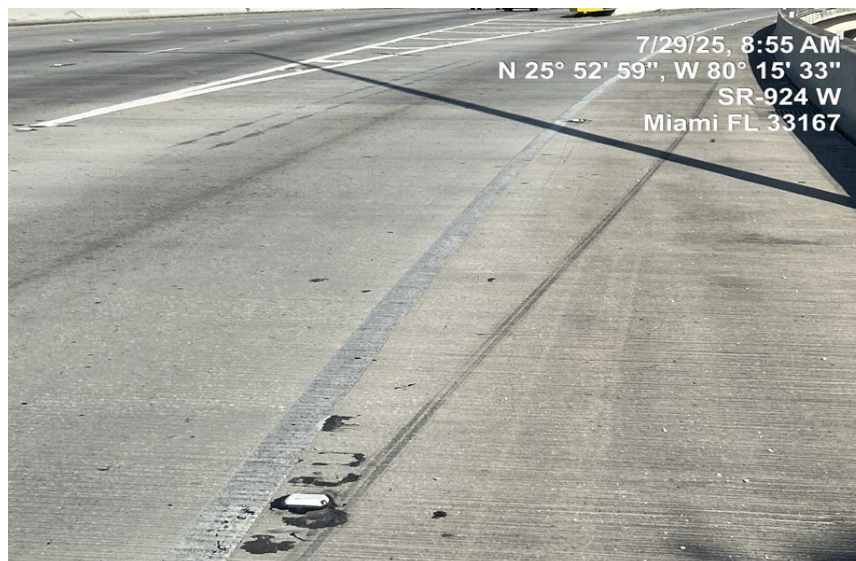
General Engineering Consultant to the  
Greater Miami Expressway Agency

**GENERAL ENGINEERING CONSULTANT INSPECTION AND  
EVALUATION OF THE MIAMI-DADE COUNTY EXPRESSWAY  
SYSTEM**

**GRATIGNY PARKWAY (SR-924): 5.37 MILES  
PHOTOGRAPHIC INVENTORY**

**PHOTO NO.: WB-002  
DATE: 7-29-2025**

**ROADWAY INSPECTION  
LOCATION: MILE MARKER 4.3 MILES  
WESTBOUND MAINLINE**



**DETERIORATED PAVEMENT MARKINGS IN GORE AREA AND EDGE LINES  
(BRIDGE #870740)**

**ITEM NOTED TO BE ADDRESSED BY GMX WORK PROGRAM 30033**



General Engineering Consultant to the  
Greater Miami Expressway Agency

**GENERAL ENGINEERING CONSULTANT INSPECTION AND  
EVALUATION OF THE MIAMI-DADE COUNTY EXPRESSWAY  
SYSTEM**

**GRATIGNY PARKWAY (SR-924): 5.37 MILES  
PHOTOGRAPHIC INVENTORY**

**PHOTO NO.: WB-003  
DATE: 7-29-2025**

**ROADWAY INSPECTION  
LOCATION: MILE MARKER 3.7 MILES  
WESTBOUND MAINLINE**



**DETERIORATED ASPHALT PAVEMENT AND PAVEMENT MARKINGS**

**ITEM NOTED TO BE ADDRESSED BY GMX WORK PROGRAM 30044**





General Engineering Consultant to the  
Greater Miami Expressway Agency

**GENERAL ENGINEERING CONSULTANT INSPECTION AND  
EVALUATION OF THE MIAMI-DADE COUNTY EXPRESSWAY  
SYSTEM**

**GRATIGNY PARKWAY (SR-924): 5.37 MILES  
PHOTOGRAPHIC INVENTORY**

**PHOTO NO.: WB-004  
DATE: 7-29-2025**

**ROADWAY INSPECTION  
LOCATION: MILE MARKER 2.45 MILES  
WESTBOUND MAINLINE**



**SCUFF MARKS ON BARRIER WALL**

**ITEM NOTED TO BE ADDRESSED BY GMX WORK PROGRAM TBD**





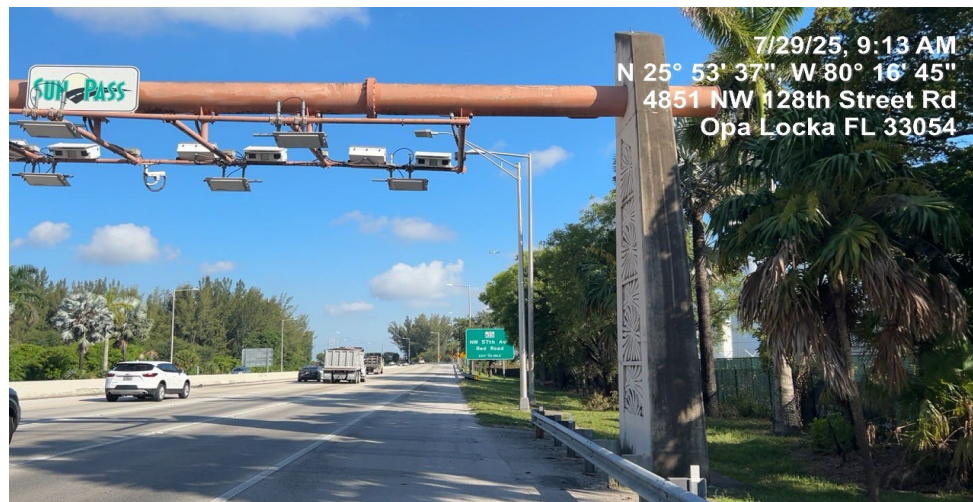
General Engineering Consultant to the  
Greater Miami Expressway Agency

**GENERAL ENGINEERING CONSULTANT INSPECTION AND  
EVALUATION OF THE MIAMI-DADE COUNTY EXPRESSWAY  
SYSTEM**

**GRATIGNY PARKWAY (SR-924): 5.37 MILES  
PHOTOGRAPHIC INVENTORY**

**PHOTO NO.: WB-005  
DATE: 7-29-2025**

**ROADWAY INSPECTION  
LOCATION: MILE MARKER 2.88 MILES  
WESTBOUND MAINLINE**



**DETERIORATED PAINT ON MONO-TUBE AND CLASS V COATING ON UPRIGHT**

**ITEM NOTED TO BE ADDRESSED BY GMX WORK PROGRAM 30043**





General Engineering Consultant to the  
Greater Miami Expressway Agency

**GENERAL ENGINEERING CONSULTANT INSPECTION AND  
EVALUATION OF THE MIAMI-DADE COUNTY EXPRESSWAY  
SYSTEM**

**GRATIGNY PARKWAY (SR-924): 5.37 MILES  
PHOTOGRAPHIC INVENTORY**

**PHOTO NO.: WB-006  
DATE: 7-29-2025**

**ROADWAY INSPECTION  
LOCATION: MILE MARKER 1.8 MILES  
WESTBOUND MAINLINE**



**DETERIORATED ASPHALT PAVEMENT**

**ITEM NOTED TO BE ADDRESSED BY GMX WORK PROGRAM 30044**





General Engineering Consultant to the  
Greater Miami Expressway Agency

**GENERAL ENGINEERING CONSULTANT INSPECTION AND  
EVALUATION OF THE MIAMI-DADE COUNTY EXPRESSWAY  
SYSTEM**

**GRATIGNY PARKWAY (SR-924): 5.37 MILES  
PHOTOGRAPHIC INVENTORY**

**PHOTO NO.: WB-007  
DATE: 7-29-2025**

**ROADWAY INSPECTION  
LOCATION: MILE MARKER 1.22  
WESTBOUND MAINLINE**



**DETERIORATED PAINT ON MONO-TUBE AND CLASS V COATING ON UPRIGHT**

**ITEM NOTED TO BE ADDRESSED BY GMX WORK PROGRAM 30043**





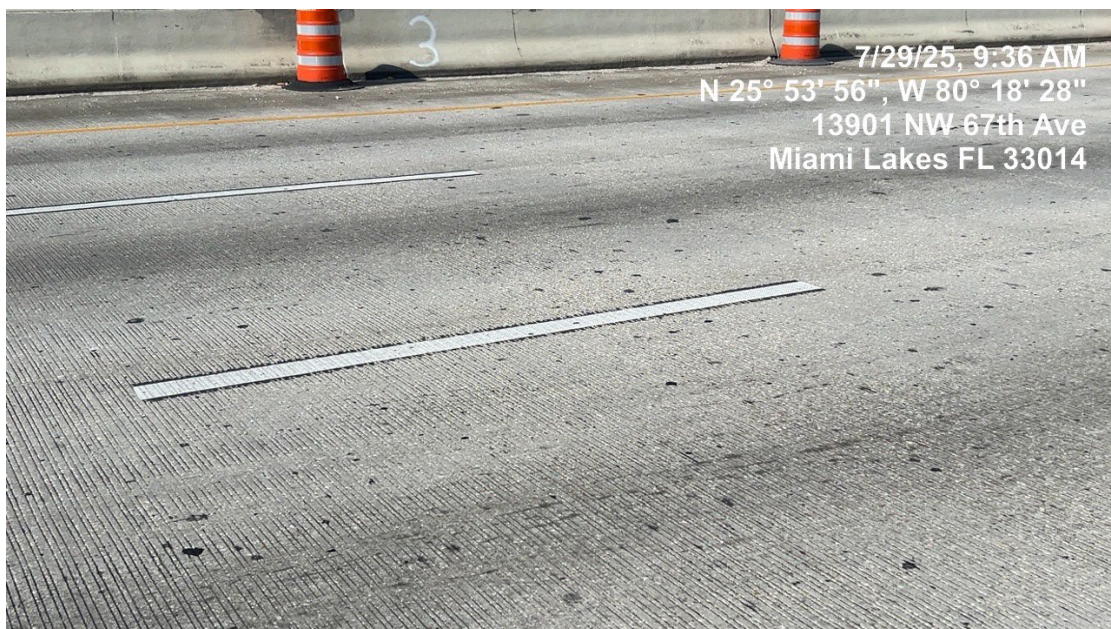
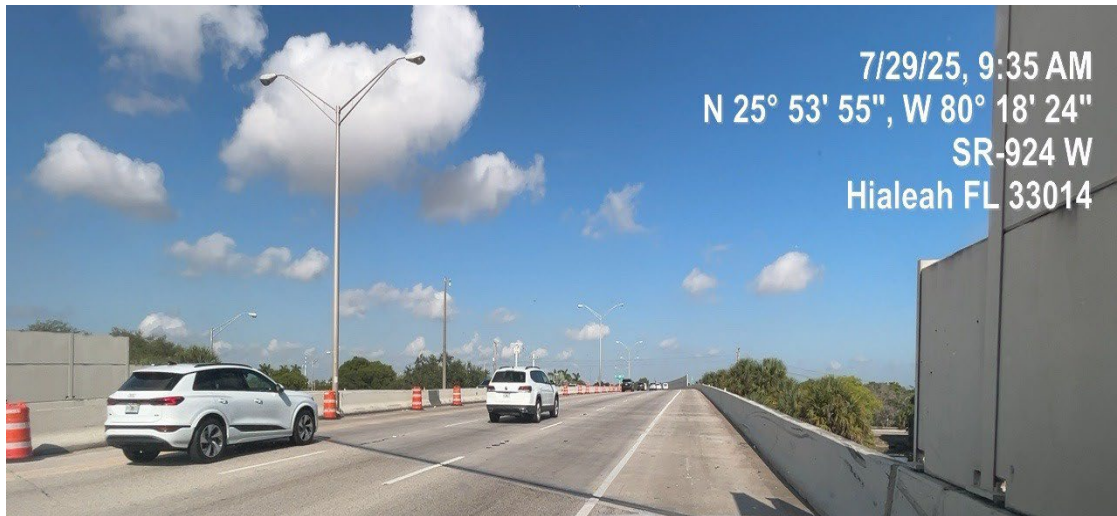
General Engineering Consultant to the  
Greater Miami Expressway Agency

**GENERAL ENGINEERING CONSULTANT INSPECTION AND  
EVALUATION OF THE MIAMI-DADE COUNTY EXPRESSWAY  
SYSTEM**

**GRATIGNY PARKWAY (SR-924): 5.37 MILES  
PHOTOGRAPHIC INVENTORY**

**PHOTO NO.: WB-008  
DATE: 7-29-2025**

**ROADWAY INSPECTION  
LOCATION: MILE MARKER 1.0  
WESTBOUND MAINLINE**



**DETERIORATED PAVEMENT MARKINGS**

**ITEM NOTED TO BE ADDRESSED BY GMX WORK PROGRAM 30033**





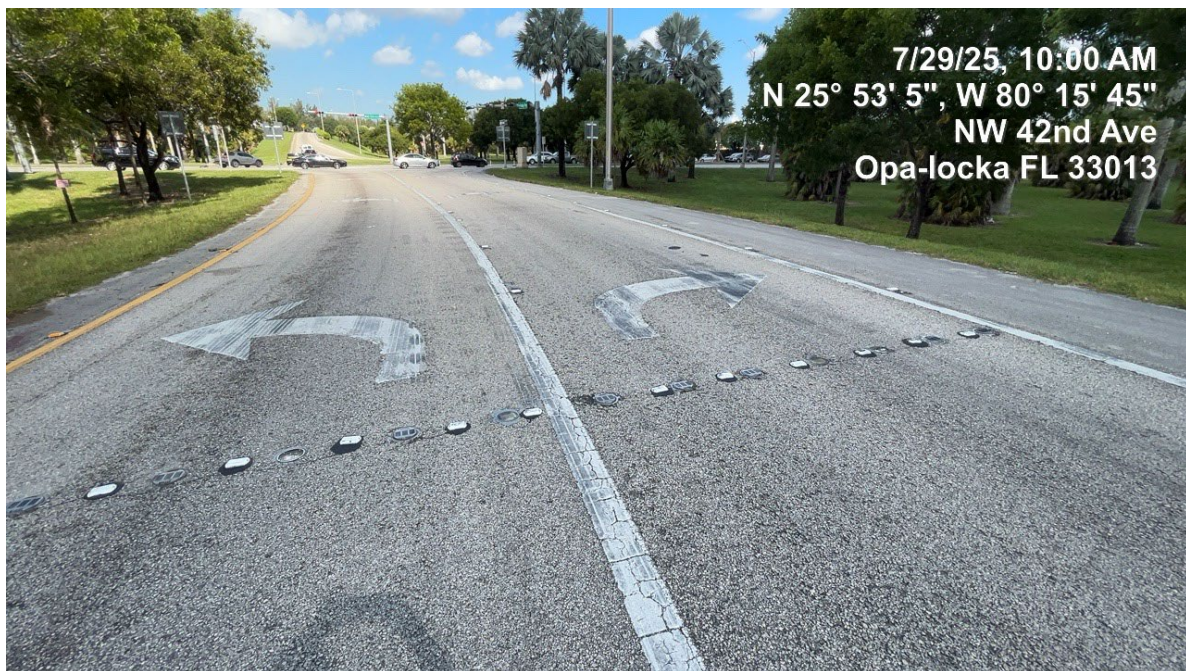
General Engineering Consultant to the  
Greater Miami Expressway Agency

**GENERAL ENGINEERING CONSULTANT INSPECTION AND  
EVALUATION OF THE MIAMI-DADE COUNTY EXPRESSWAY  
SYSTEM**

**GRATIGNY PARKWAY (SR-924): 5.37 MILES  
PHOTOGRAPHIC INVENTORY**

**PHOTO NO.: WB-009  
DATE: 7-29-2025**

**ROADWAY INSPECTION  
LOCATION: MILE MARKER 4.1  
WESTBOUND OFF-RAMP TO NW 37<sup>th</sup> Ave.**



**DETERIORATED PAVEMENT MARKINGS AND TURN ARROWS**

**ITEM NOTED TO BE ADDRESSED BY GMX WORK PROGRAM 30033**



General Engineering Consultant to the  
Greater Miami Expressway Agency

**GENERAL ENGINEERING CONSULTANT INSPECTION AND  
EVALUATION OF THE MIAMI-DADE COUNTY EXPRESSWAY  
SYSTEM**

**GRATIGNY PARKWAY (SR-924): 5.37 MILES  
PHOTOGRAPHIC INVENTORY**

**PHOTO NO.: WB-010  
DATE: 7-29-2025**

**ROADWAY INSPECTION  
LOCATION: MILE MARKER 2.0  
WESTBOUND OFF-RAMP TO NW 37<sup>th</sup> Ave.**



**DETERIORATED STOP BAR AND PEDESTRIAN CROSSWALK  
ITEM NOTED TO BE ADDRESSED BY GMX WORK PROGRAM 30033**





General Engineering Consultant to the  
Greater Miami Expressway Agency

**GENERAL ENGINEERING CONSULTANT INSPECTION AND  
EVALUATION OF THE MIAMI-DADE COUNTY EXPRESSWAY  
SYSTEM**

**GRATIGNY PARKWAY (SR-924): 5.37 MILES  
PHOTOGRAPHIC INVENTORY**

**PHOTO NO.: WB-011  
DATE: 7-29-2025**

**ROADWAY INSPECTION  
LOCATION: MILE MARKER 4.1  
WESTBOUND MAINLINE OVER NW 37<sup>TH</sup> Ave.**



**DETERIORATED CLASS V COATING ON BRIDGE  
(BRIDGE #870739) TYPICALLY THROUGHOUT**

**ITEM NOTED TO BE ADDRESSED BY GMX WORK PROGRAM TBD**



General Engineering Consultant to the  
Greater Miami Expressway Agency

**GENERAL ENGINEERING CONSULTANT INSPECTION AND  
EVALUATION OF THE MIAMI-DADE COUNTY EXPRESSWAY  
SYSTEM**

**GRATIGNY PARKWAY (SR-924): 5.37 MILES  
PHOTOGRAPHIC INVENTORY**

**PHOTO NO.: WB-012  
DATE: 7-29-2025**

**ROADWAY INSPECTION  
LOCATION: MILE MARKER 4.08  
WESTBOUND ON-RAMP FROM NW 37<sup>TH</sup> AVE**



**DETERIORATED PEDESTRIAN CROSSWALK PAVEMENT MARKINGS**

**ITEM NOTED TO BE ADDRESSED BY GMX WORK PROGRAM 30033**

GMX ANNUAL ROADWAY INSPECTION  
NW 138TH EASTBOUND





General Engineering Consultant to the  
Greater Miami Expressway Agency

**GENERAL ENGINEERING CONSULTANT INSPECTION AND  
EVALUATION OF THE MIAMI-DADE COUNTY EXPRESSWAY  
SYSTEM**

**NW 138<sup>th</sup> STREET 1.76 MILES**

**PHOTO NO.: EB-001  
DATE: 8-31-2025**

**ROADWAY INSPECTION  
LOCATION: EASTBOUND NW 138<sup>th</sup> STREET  
1120 FEET WEST OF NW 107 AVE.**



**DETERIORATED PAVEMENT MARKINGS**

**ITEM NOTED TO BE ADDRESSED BY GMX WORK PROGRAM 30033**



General Engineering Consultant to the  
Greater Miami Expressway Agency

**GENERAL ENGINEERING CONSULTANT INSPECTION AND  
EVALUATION OF THE MIAMI-DADE COUNTY EXPRESSWAY  
SYSTEM**

**NW 138<sup>th</sup> STREET 1.76 MILES**

**PHOTO NO.: EB-002  
DATE: 8-31-2025**

**ROADWAY INSPECTION  
LOCATION: EASTBOUND NW 138<sup>th</sup> STREET  
610 FEET NORTH OF FRONTAGE ROAD**



**DETERIORATED ASPHALT PAVEMENT**

**ITEM NOTED TO BE ADDRESSED BY GMX WORK PROGRAM 30061**





General Engineering Consultant to the  
Greater Miami Expressway Agency

**GENERAL ENGINEERING CONSULTANT INSPECTION AND  
EVALUATION OF THE MIAMI-DADE COUNTY EXPRESSWAY  
SYSTEM**

**NW 138<sup>th</sup> STREET 1.76 MILES**

**PHOTO NO.: EB-003  
DATE: 8-31-2025**

**ROADWAY INSPECTION  
LOCATION: EASTBOUND NW 138<sup>th</sup> STREET  
823 FEET NORTH OF FRONTAGE ROAD**



**PAVEMENT SETTLEMENT AT WATER VALVE**

**ITEM NOTED TO BE ADDRESSED BY GMX WORK PROGRAM 30061**





General Engineering Consultant to the  
Greater Miami Expressway Agency

**GENERAL ENGINEERING CONSULTANT INSPECTION AND  
EVALUATION OF THE MIAMI-DADE COUNTY EXPRESSWAY  
SYSTEM**

**NW 138<sup>th</sup> STREET 1.76 MILES**

**PHOTO NO.: EB-004  
DATE: 8-31-2025**

**ROADWAY INSPECTION  
LOCATION: EASTBOUND NW 138<sup>th</sup> STREET  
1120 FEET WEST OF NW 107 AVE.**



**DETERIORATED STRIPING**

**ITEM NOTED TO BE ADDRESSED BY GMX WORK PROGRAM 30033**



General Engineering Consultant to the  
Greater Miami Expressway Agency

**GENERAL ENGINEERING CONSULTANT INSPECTION AND  
EVALUATION OF THE MIAMI-DADE COUNTY EXPRESSWAY  
SYSTEM**

**NW 138<sup>th</sup> STREET 1.76 MILES**

**PHOTO NO.: EB-005  
DATE: 8-31-2025**

**ROADWAY INSPECTION  
LOCATION: EASTBOUND NW 138<sup>th</sup> STREET  
EAST OF NW 107 AVE.**



**DETERIORATED STRIPING**

**ITEM NOTED TO BE ADDRESSED BY GMX WORK PROGRAM 30033**



General Engineering Consultant to the  
Greater Miami Expressway Agency

**GENERAL ENGINEERING CONSULTANT INSPECTION AND  
EVALUATION OF THE MIAMI-DADE COUNTY EXPRESSWAY  
SYSTEM**

**NW 138<sup>th</sup> STREET 1.76 MILES**

**PHOTO NO.: EB-006  
DATE: 9-3-2025**

**ROADWAY INSPECTION  
LOCATION: EASTBOUND NW 138<sup>th</sup> STREET  
EAST OF NW 107 AVE.**



**DETERIORATED PAVEMENT MARKINGS IN GORE AREA**

**ITEM NOTED TO BE ADDRESSED BY GMX WORK PROGRAM 30033**





General Engineering Consultant to the  
Greater Miami Expressway Agency

**GENERAL ENGINEERING CONSULTANT INSPECTION AND  
EVALUATION OF THE MIAMI-DADE COUNTY EXPRESSWAY  
SYSTEM**

**NW 138<sup>th</sup> STREET 1.76 MILES**

**PHOTO NO.: EB-007  
DATE: 9-3-2025**

**ROADWAY INSPECTION  
LOCATION: EASTBOUND NW 138<sup>th</sup> STREET  
AT NW 107 AVE.**



**DETERIORATED PAVEMENT MARKINGS AND TURN ARROWS**

**ITEM NOTED TO BE ADDRESSED BY GMX WORK PROGRAM 30033**



General Engineering Consultant to the  
Greater Miami Expressway Agency

**GENERAL ENGINEERING CONSULTANT INSPECTION AND  
EVALUATION OF THE MIAMI-DADE COUNTY EXPRESSWAY  
SYSTEM**

**NW 138<sup>th</sup> STREET 1.76 MILES**

**PHOTO NO.: EB-008  
DATE: 9-3-2025**

**ROADWAY INSPECTION  
LOCATION: EASTBOUND NW 138<sup>th</sup> STREET  
EAST OF NW 102 AVE.**



**SETTLEMENT ON PAVEMENT (OUTSIDE LANE)**

**ITEM NOTED TO BE ADDRESSED BY GMX WORK PROGRAM 30061**



General Engineering Consultant to the  
Greater Miami Expressway Agency

**GENERAL ENGINEERING CONSULTANT INSPECTION AND  
EVALUATION OF THE MIAMI-DADE COUNTY EXPRESSWAY  
SYSTEM**

**NW 138<sup>th</sup> STREET 1.76 MILES**

**PHOTO NO.: EB-009  
DATE: 9-3-2025**

**ROADWAY INSPECTION  
LOCATION: EASTBOUND NW 138<sup>th</sup> STREET  
AT NW 97<sup>TH</sup> AVENUE.**



**DETERIORATED PAVEMENT MARKINGS, STOP BAR AND PEDESTRIAN  
CROSSWALK**

**ITEM NOTED TO BE ADDRESSED BY GMX WORK PROGRAM 30033**



GMX ANNUAL ROADWAY INSPECTION  
NW 138TH WESTBOUND



General Engineering Consultant to the  
Greater Miami Expressway Agency

**GENERAL ENGINEERING CONSULTANT INSPECTION AND  
EVALUATION OF THE MIAMI-DADE COUNTY EXPRESSWAY  
SYSTEM**

**NW 138<sup>th</sup> STREET 1.76 MILES**

**PHOTO NO.: WB-001  
DATE: 8-31-2025**

**ROADWAY INSPECTION  
LOCATION: WESTBOUND NW 138<sup>th</sup> STREET  
AT NW 97<sup>th</sup> AVENUE**



**DETERIORATED PAVEMENT MARKINGS ON PEDESTRIAN CROSSWALK**

**ITEM NOTED TO BE ADDRESSED BY GMX WORK PROGRAM 30033**



General Engineering Consultant to the  
Greater Miami Expressway Agency

**GENERAL ENGINEERING CONSULTANT INSPECTION AND  
EVALUATION OF THE MIAMI-DADE COUNTY EXPRESSWAY  
SYSTEM**

**NW 138<sup>th</sup> STREET 1.76 MILES**

**PHOTO NO.: WB-002  
DATE: 8-31-2025**

**ROADWAY INSPECTION  
LOCATION: WESTBOUND NW 138<sup>th</sup> STREET  
FROM 500 FT EAST OF NW 97<sup>th</sup> AVENUE  
TO FRONTAGE ROAD**



**GUARDRAIL HEIGHT NOT TO THE LATEST FDOT STANDARDS**

**ITEM NOTED TO BE ADDRESSED BY GMX WORK PROGRAM 30061**





General Engineering Consultant to the  
Greater Miami Expressway

**GENERAL ENGINEERING CONSULTANT INSPECTION AND  
EVALUATION OF THE MIAMI-DADE COUNTY EXPRESSWAY  
SYSTEM**

**NW 138<sup>th</sup> STREET 1.76 MILES**

**PHOTO NO.: WB-003  
DATE: 9-3-2025**

**ROADWAY INSPECTION  
LOCATION: WESTBOUND NW 138<sup>th</sup> STREET  
300 FT EAST OF NW 97<sup>TH</sup> AVENUE.**



**POTHOLE ON INSIDE LANE/ DETERIORATED STRIPING**

**ITEM NOTED TO BE ADDRESSED BY GMX WORK PROGRAM 30033 & 30061**



General Engineering Consultant to the  
Greater Miami Expressway Agency

**GENERAL ENGINEERING CONSULTANT INSPECTION AND  
EVALUATION OF THE MIAMI-DADE COUNTY EXPRESSWAY  
SYSTEM**

**NW 138<sup>th</sup> STREET 1.76 MILES**

**PHOTO NO.: WB-004  
DATE: 8-31-2025**

**ROADWAY INSPECTION  
LOCATION: WESTBOUND AT NW 138<sup>th</sup> STREET  
AT NW 102<sup>ND</sup> AVENUE.**



**DETERIORATED PEDESTRIAN CROSSWALK AND STOP BAR**

**ITEM NOTED TO BE ADDRESSED BY GMX WORK PROGRAM 30033**





General Engineering Consultant to the  
Greater Miami Expressway Agency

**GENERAL ENGINEERING CONSULTANT INSPECTION AND  
EVALUATION OF THE MIAMI-DADE COUNTY EXPRESSWAY  
SYSTEM**

**NW 138<sup>th</sup> STREET 1.76 MILES**

**PHOTO NO.: WB-005  
DATE: 8-31-2025**

**ROADWAY INSPECTION  
LOCATION: WESTBOUND NW 138<sup>th</sup> STREET  
AT NW 107<sup>TH</sup> AVENUE.**



8/31/25, 10:11 AM  
+25.898755,-80.372471  
NW 107th Ave  
Hialeah Gardens FL 33018

**EXISTING GUARDRAIL NOT TO FDOT STANDARDS**

**ITEM NOTED TO BE ADDRESSED BY GMX WORK PROGRAM 30061**





General Engineering Consultant to the  
Greater Miami Expressway Agency

**GENERAL ENGINEERING CONSULTANT INSPECTION AND  
EVALUATION OF THE MIAMI-DADE COUNTY EXPRESSWAY  
SYSTEM**

**NW 138<sup>th</sup> STREET 1.76 MILES**

**PHOTO NO.: WB-006  
DATE: 8-31-2025**

**ROADWAY INSPECTION  
LOCATION: WESTBOUND NW 138<sup>th</sup> STREET  
300 FT WEST OF NW 107<sup>th</sup> AVENUE.**



**DETERIORATED PAVEMENT MARKINGS AND PAVEMENT MESSAGE**

**ITEM NOTED TO BE ADDRESSED BY GMX WORK PROGRAM 30033**



General Engineering Consultant to the  
Greater Miami Expressway Agency

**GENERAL ENGINEERING CONSULTANT INSPECTION AND  
EVALUATION OF THE MIAMI-DADE COUNTY EXPRESSWAY  
SYSTEM**

**NW 138<sup>th</sup> STREET 1.76 MILES**

**PHOTO NO.: WB-007  
DATE: 8-31-2025**

**ROADWAY INSPECTION  
LOCATION: WESTBOUND WEST OF NW 107<sup>th</sup> AVENUE**



**DETERIORATED CHEVRONS/OVERGROWN VEGETATION ADJACENT TO  
CHEVRONS SIGNS**

**ITEM NOTED TO BE ADDRESSED BY GMX WORK PROGRAM 30033 AND GMX  
MAINTENANCE RFP-23-01**





General Engineering Consultant to the  
Greater Miami Expressway Agency

**GENERAL ENGINEERING CONSULTANT INSPECTION AND  
EVALUATION OF THE MIAMI-DADE COUNTY EXPRESSWAY  
SYSTEM**

**NW 138<sup>th</sup> STREET 1.76 MILES**

**PHOTO NO.: WB-008  
DATE: 9-3-2025**

**ROADWAY INSPECTION  
LOCATION: WESTBOUND NORTH OF FRONTAGE ROAD**



**DETERIORATED PAVEMENT MARKINGS**

**ITEM NOTED TO BE ADDRESSED BY GMX WORK PROGRAM 30033**





General Engineering Consultant to the  
Greater Miami Expressway Agency

**GENERAL ENGINEERING CONSULTANT INSPECTION AND  
EVALUATION OF THE MIAMI-DADE COUNTY EXPRESSWAY  
SYSTEM**

**NW 138<sup>th</sup> STREET 1.76 MILES**

**PHOTO NO.: WB-009  
DATE: 9-3-2025**

**ROADWAY INSPECTION  
LOCATION: WESTBOUND AT NW 97<sup>th</sup> AVENUE**



9/3/25, 9:09 AM  
+25.898818,-80.356138  
3575-3599 W 84th St  
Hialeah FL 33018

**DETERIORATED PAVEMENT**

**ITEM NOTED TO BE ADDRESSED BY GMX WORK PROGRAM 30061**

GMX ANNUAL NSPECTION SR 836 MAIN ADMIN BLDG



General Engineering Consultant to the  
Greater Miami Expressway Agency

**GENERAL ENGINEERING CONSULTANT INSPECTION AND  
EVALUATION OF THE MIAMI-DADE COUNTY EXPRESSWAY  
SYSTEM**

**DOLPHIN EXPRESSWAY (SR-836): 14.00 MILES  
PHOTOGRAPHIC INVENTORY**

**PHOTO NO.: A-001  
DATE: 9-3-2025**

**ARCHITECTURAL INSPECTION  
LOCATION: SR-836 MAIN ADMINISTRATION BUILDING  
(MECHANICAL ROOM)**



**SURFACE CORROSION ON METAL CANOPY**

**ITEM NOTED TO BE ADDRESSED BY GMX FACILITIES MAINTENANCE ITB 23-12**





General Engineering Consultant to the  
Greater Miami Expressway Agency

**GENERAL ENGINEERING CONSULTANT INSPECTION AND  
EVALUATION OF THE MIAMI-DADE COUNTY EXPRESSWAY  
SYSTEM**

**DOLPHIN EXPRESSWAY (SR-836): 14.00 MILES  
PHOTOGRAPHIC INVENTORY**

**PHOTO NO.: A-002  
DATE: 9-3-2025**

**ARCHITECTURAL INSPECTION  
LOCATION: SR-836 MAIN ADMINISTRATION BUILDING  
KITCHEN AREA**



9/3/25, 10:34 AM  
+25.782737,-80.228595  
2034 NW 11th St  
Miami FL 33125

**BURNT OUT INTERIOR LIGHTING**

**ITEM NOTED TO BE ADDRESSED BY GMX MAINTENANCE ITB-23-12**



General Engineering Consultant to the  
Greater Miami Expressway Agency

**GENERAL ENGINEERING CONSULTANT INSPECTION AND  
EVALUATION OF THE MIAMI-DADE COUNTY EXPRESSWAY  
SYSTEM**

**DOLPHIN EXPRESSWAY (SR-836): 14.00 MILES  
PHOTOGRAPHIC INVENTORY**

**PHOTO NO.: A-003  
DATE: 9-3-2025**

**ARCHITECTURAL INSPECTION  
LOCATION: SR-836 MAIN ADMINISTRATION BUILDING  
SUPPLY STORAGE**



**BURNED OUT LIGHTS**

**ITEM NOTED TO BE ADDRESSED BY GMX FACILITIES MAINTENANCE ITB-23-12**



General Engineering Consultant to the  
Greater Miami Expressway Agency

**GENERAL ENGINEERING CONSULTANT INSPECTION AND  
EVALUATION OF THE MIAMI-DADE COUNTY EXPRESSWAY  
SYSTEM**

**DOLPHIN EXPRESSWAY (SR-836): 14.00 MILES  
PHOTOGRAPHIC INVENTORY**

**PHOTO NO.: A-004  
DATE: 9-3-2025**

**ARCHITECTURAL INSPECTION  
LOCATION: SR-836 MAIN ADMINISTRATION BUILDING  
MANAGER'S OFFICE**



**BURNED OUT LIGHTS**

**ITEM NOTED TO BE ADDRESSED BY GMX FACILITIES MAINTENANCE ITB-23-12**



GMX ANNUAL NSPECTION SR 836 NW 97TH AVE ADMIN BLDG WESTBOUND



General Engineering Consultant to the  
Greater Miami Expressway Agency

**GENERAL ENGINEERING CONSULTANT INSPECTION AND  
EVALUATION OF THE MIAMI-DADE COUNTY EXPRESSWAY  
SYSTEM**

**DOLPHIN EXPRESSWAY (SR-836): 14.00 MILES  
PHOTOGRAPHIC INVENTORY**

**PHOTO NO.: A-001  
DATE: 9-3-2025**

**ARCHITECTURAL INSPECTION  
LOCATION: SR-836 / NW 97<sup>th</sup> AVENUE WESTBOUND**



**DETERIORATED PAINT ON MONOTUBE/CLASS V COATING ON**

**STRUCTURE UPRIGHT**

**ITEM NOTED TO BE ADDRESSED BY GMX WORK PROGRAM TBD**



General Engineering Consultant to the  
Greater Miami Expressway Agency

**GENERAL ENGINEERING CONSULTANT INSPECTION AND  
EVALUATION OF THE MIAMI-DADE COUNTY EXPRESSWAY  
SYSTEM**

**DOLPHIN EXPRESSWAY (SR-836): 14.00 MILES  
PHOTOGRAPHIC INVENTORY**

**PHOTO NO.: A-002  
DATE: 9-3-2025**

**ARCHITECTURAL INSPECTION  
LOCATION: SR-836 / NW 97<sup>th</sup> AVENUE WESTBOUND  
TOLL PLAZA**



**DETERIORATED PAINT ON WALLS AND DOORS ON GENERATOR ENCLOSURE**

**ITEM NOTED TO BE ADDRESSED BY GMX WORK PROGRAM TBD**



GMX ANNUAL NSPECTION SR 836 NW 97TH AVE ADMIN BLDG EASTBOUND



General Engineering Consultant to the  
Greater Miami Expressway Agency

**GENERAL ENGINEERING CONSULTANT INSPECTION AND  
EVALUATION OF THE MIAMI-DADE COUNTY EXPRESSWAY  
SYSTEM**

**DOLPHIN EXPRESSWAY (SR-836): 14.00 MILES  
PHOTOGRAPHIC INVENTORY**

**PHOTO NO.: A-001  
DATE: 9-3-2025**

**ARCHITECTURAL INSPECTION  
LOCATION: SR-836 / NW 97<sup>th</sup> AVENUE EASTBOUND  
TOLL PLAZA CANOPY**



**DETERIORATED PAINT ON CANOPY COLUMNS**

**ITEM NOTED TO BE ADDRESSED BY GMX WORK PROGRAM TBD**



General Engineering Consultant to the  
Greater Miami Expressway Agency

**GENERAL ENGINEERING CONSULTANT INSPECTION AND  
EVALUATION OF THE MIAMI-DADE COUNTY EXPRESSWAY  
SYSTEM**

**DOLPHIN EXPRESSWAY (SR-836): 14.00 MILES  
PHOTOGRAPHIC INVENTORY**

**PHOTO NO.: A-002  
DATE: 9-3-2025**

**ARCHITECTURAL INSPECTION  
LOCATION: SR-836 / NW 97<sup>th</sup> AVENUE EASTBOUND**



**DETERIORATED PAINT AT GENERATOR ENCLOSURE WALLS AND DOORS**

**ITEM NOTED TO BE ADDRESSED BY GMX MAINTENANCE ITB-23-12**



GMX ANNUAL INSPECTION SR 874 ADMIN BLDG NORTHBOUND  
(No Deficiencies Were Noted)

GMX ANNUAL INSPECTION SR 924 ADMIN BLDG WESTBOUND  
(No Deficiencies Were Noted)